

Chôros No. 10 ("Rasga o Coração")
SSAATTBB div. and orch.

Villa-Lobos, ed. Valverde

pdf download - \$6.00
printed - \$14.50

BC-014

BORDER CROSSING

Chôros No. 10 ("Rasga o Coração")

Choral Score

SSAATTBB div. choir and orchestra

Heitor Villa-Lobos

ed. Matthew Valverde



Graphite™

The music from this
publisher is exclusively
distributed by Graphite.
GraphitePublishing.com

Rasga o Coração

Se tu queres ver
a imensidão do céu e mar,
refletindo a prismação da luz solar,
rasga o coração,
vem te debruçar
sobre a vastidão do meu penar!

Sorve todo o olor
que anda a recender
pelas espinhosas florações do meu sofrer!
Vê se podes ler nas suas pulsações
as brancas ilusões
e o que ele diz no seu gemer

E que não pode a ti dizer
nas palpitações!
Ouve-o brandamente, docemente palpitar,
casto e purpural, num treno vespéral,
mais puro que uma cândida vestal!

Rasga-o, que há de ver
lá dentro a dor a soluçar!
Sob o peso de uma cruz de lágrimas,
chorar!
Anjos a cantar
preces divinais,
Deus a ritimar seus pobres ais.

– Catulo da Paixão Cearense

Tear My Heart Apart

If you desire to see
the immenseness of sky and sea,
reflecting an array of colors made from sunlight,
tear my heart apart,
come peer over
the vastness of my pain!

Drink in the scent
that returns conjured
by the thorny blossoms of my suffering!
See if you can interpret in its pulsing
faint impressions
and the meaning of its wailing

And what it cannot yet express
in palpitations!
Hear it gently, softly beat,
chaste and renewed in an evening lament,
purer than virginal innocence!

Rip it open! You will see
the sorrow there inside, weeping,
bearing the weight of a mournful cross,
crying.
Angels singing
divine prayers,
God, beat out its humble woes.

Translation by Mari Esabel Valverde

From our Artistic Director:

The word *chôro*, Portuguese for “crying,” refers to ensembles of Brazilian street musicians (*chorões*) who play using a combination of European, African, and Indigenous instruments. Villa-Lobos described the concept of his series of *Chôros* as an extension of this popular street music into a symphonic style that embraces the many elements of Brazilian music and culture. **Chôros No. 10** includes a song that was a popular hit at the time: “Rasga o Coração.”

This piece is in three parts. The first section is full of activity, reminiscent of an urban landscape, with sounds of construction and traffic and ever-present birdsong. This gives way to an impressionistic, atmospheric middle, a nocturne featuring various instrumental solos punctuated by the noises of the rainforest. A clarinet cadenza leads into the final section, which combines themes we’ve already heard with a driving pulse that builds in the orchestra. The choir begins by rhythmically chanting nonsense syllables, speech fragments created by Villa-Lobos that are reminiscent of the many different Indigenous languages spoken in Brazil. The choir then weaves the verses of “Rasga o Coração” within the greater texture of the orchestra, building to a grand finale on the words “Rip it open! You will see!” This piece is a declaration of love for Brazil. As the poem states, it tries to hold in itself both the sea and the sky, the vastness of pain, and every color under the sun.

– Ahmed Anzaldúa

IPA Transcription and Translations:

Note: Words marked with asterisk (*) contain at least one 's' that can be pronounced one of two ways. It could be interpreted in the Carioca accent, which would reflect the Rio de Janeiro region where the piece was composed, as follows: [ʃ] when unvoiced and [ʒ] when voiced. However, in this IPA transcription the Brazilian Portuguese pronunciation interprets this phoneme as [s] when unvoiced and [z] when voiced.

*Rasga [ˈxaz.gaw rend (Tear My Heart Apart)	o the	Coração, ko.ra.'sẽw heart	*Chôros 'ʃo.rus weeping	Nº 'nu.me.ru number	*10 dez] ten
---	-----------------	--	--------------------------------------	----------------------------------	---------------------------

Music by

Heitor

[ej.'tox

***Villa-Lobos**

vi.la.'lo.buʃ]

Text by

Catulo

[ka.'tu.lu

da

da

Paixão

paj.'ʃẽw

Cearense

se.a.'rẽ.si]

Tenors:

Jakatá

[ʒa.ka.'ta

kamarajá,

ka.ma.ra.'ʒa]

Ti, Tú,

[ti tu

Ti,

ti

Tó,

tɔ

Kayá!

ka.'ja]

Maracá,

[ma.ra.'ka

Ti

ti

Tó

tɔ

Kaouêh!

ka.ow.'e

Êh!

e]

Ká, Tú,

[ka tu

ly,

li

kaouêh...

kaw.'e

hê...

e

Hy...

i]

Tapitó,

[ta.pi.'tɔ

palapatá,

pa.la.pa.'ta

Ah!

a]

Jakalá,

[ʒa.ka.'la

Tôçá,

to.'sa

Tôcê,

to.'se

kahuê!

ka.u.'e]

Hum! Tum!

[ũ tũ]

Jakatá

[ʒa.ka.'ta

kamarajá,

ka.ma.ra.'ʒa]

Uê, tó,

[we tɔ

cê,

se

tá,

ta

tôré,

to.'re

Kaiá!

ka.'ja]

a Paulo Prado

Chôros No. 10 ("Rasga o Coração")

for SSAATTBB div. choir and orchestra

Catulo da Paixão Cearense

Heitor Villa-Lobos

Choral score edited by Matthew Valverde

as performed by Border CrosSing

Animé (♩ = 88) **A** **B**

1 13 14 8 22 3

Soprano 1

Soprano 2

Alto 1

Alto 2

Tenor 1

Tenor 2

Baritone

Bass 1

Bass 2

Piano (for rehearsal only)

Please visit GraphitePublishing.com to purchase scores.

C Plus animé

D

E

F

G

H

26 20 46 6 52 9 61 7 68 7 75 4

Choir

I Lent

J

K

79 5 86 5 91 3 95 4

Choir

L Animez

1

2

Un peu plus encore

99 8 107 9 117 9

Choir

3 Animé (♩ = 92)

128 4

Choir

137

Choir

4

144 147 3 150 7 157

Choir

5 Très peu animé et bien rythmé (♩ = 96)

159 161 11

Choir

(Bsn. solo)

172

Orch.

For perusal only. Do not copy.

Please visit GraphitePublishing.com to purchase scores.

176 *mf*

T2

Ja-ka-tá ka-ma-ra-já, Ja-ka-tá ka-ma-ra - já, Ja-ka-tá ka-ma-ra-já, Ka-ma-ra-já ka-ma-ra -

Orch.

176

176

For perusal only. Do not copy.

Please visit GraphitePublishing.com to purchase scores.

178 *mf*

A2

Ta-ya-pó ka-ma-ra-jó Ta-ya-pó ka-ma-ra - jó, Ta-ya-pó ka-ma-ra-jó, Ka-ma-ra-jó, ka-ma-ra -

simile *sfz* *sfz*

T2

8

já, Ti, Tú, Ti, Tó, Ti, Tú, Cá - yá! Ti, Tú, Ti, Tó, Ti, Tú, Cá -

178

For perusal only. Do not copy.

Please visit GraphitePublishing.com to purchase scores.

For perusal only. Do not copy.

180 *simile* *sfz* *sfz*

A2 *sfz*
 jó, Uê, tô, cê, tá, tô - rê Kai - á, Uê, tô, cê, tá, tô - rê, Kai -

T1
 Ka-ma-ra - já, ka-ma-ra - já, ka-ma-ra - já, ka-ma-ra - já, ka-ma-ra - já, Ma-ra - cá, Ti, Tô, Ka-ou -

+ Tbn.
 T2 yá!

Bar. *p*
 Té - ké - ré ki - mé - ré - já, Té - ké - ré ki - mé - ré - já, Té - ké - ré ki - mé - ré - já, ki - mé - ré -

180

For perusal only. Do not copy.

182 *mf* *f* *simile* *sfz* *sfz*

A1 *mf*
 Ta-ya-pó ka-ma-ra-jó, Ta-ya-pó ka-ma-ra - jó, Sa-ba-rim-ba ka-ma-rim-ba ma-ra-jó, ma-ra -

A2
 á, Ta-ya-pó ka-ma-ra-jó, Ta-ya-pó, ka-ma-ra - jó Sa-ba-rim-ba ka-ma-rim-ba ma-ra-jó, ma-ra -

T1 *f*
 êh! êh! êh! êh! êh! êh! êh!

T2 *simile*
 Êh! Ja-ka-tá ka-ma-ra-já, Ja-ka-tá ka-ma-ra - já, Ja-ka-tá ka-ma-ra-já, Ja-ka-tá ka-ma-ra -

Bar. *simile* *sfz* *sfz*
 já, Tô, té, ti, mê, tô - rê, Kai - á, Tô, té, ti, mê, tô - rê, Kai -

182

For perusal only. Do not copy.

184

S1

S2

A1 *simile*
jô, Ta-ya-pô ka-ma-ra-jô, Ta-ya-pô ka-ma-ra - jô, Ta-ya-pô ka-ma-ra-jô, ka-ma-ra-jô, ka-ma-ra -

A2
jô,

T1 *simile*
êh! Ja-ka-tá ka-ma-ra-já, Ja-ka-tá ka-ma-ra - já Ja-ka-tá ka-ma-ra-já, Ja-ka-tá ka-ma-ra -

T2
já, Ká, Tú, ly, kaou -

+ Tbn.

Bar.
á!

B1 *p*
Té-ké-ré ki-mé-ré-jé, Té-ké-ré ki-mé-ré - jé Té-ké-ré ki-mé-ré-jé, ki-mé-ré-jé, ki-mé-ré -

B2 *p*
Tú-rú-tú ká-rú-tá-tú, ká-rú-tá-tú, ká-rú-tá - tú ká-rú-tá-tú, Hu! — Hu! Hu! Ká-lú -

184

Please visit GraphitePublishing.com to purchase scores.

BORDER CROSSING

For perusal only. Do not copy.

7

For perusal only. Do not copy.

186

S1 *f*
 Jé - ki - ri - tú - mú - rú - tú, Jé - ki - ri - tú - mú - rú - tú, Jé - ki - ri - tú - mú - rú - tú, tú - mú - rú - tú, tú - mú - rú -

S2 *f*
 Jé - ki - ri - tú - mú - rú - tú, Jé - ki - ri - tú - mú - rú - tú, Jé - ki - ri - tú - mú - rú - tú, tú - mú - rú - tú, tú - mú - rú -

A1
 jó Ta - ya - pó ka - ma - ra - jó, Ta - ya - pó ka - ma - ra - jó, Ta - ya - pó ka - ma - ra - jó, ka - ma - ra -

A2

T1
 já Ja - ka - tá ka - ma - ra - já, Ka - ma - ra - já, ka - ma - ra - já,

T2
 êh... hê... Hy... *f*
 Ja - ka - tá ka - ma - ra - já, Ja - ka - tá ka - ma - ra -

Bar.
 jé! Té - ké - ré ki - mé - ré - jé, Té - ké - ré ki - mé - ré - jé!

B1 *simile*
 jé! Uê, tô, cê, tá, tô - rê, Kai - é!

B2
 > rú! > Hu! Hu!

7

186

For perusal only. Do not copy.
 Please visit GraphitePublishing.com to purchase scores.

For perusal only. Do not copy.

Please visit GraphitePublishing.com to purchase scores.

188

S1

tú,

simile *sfz* *sfz*

S2

tú, Uê tô cê tá tô - rê kái - á, Uê tô cê tá tô - rê, kái -

A1

jó, Ta-ya-pó ka-ma-ra-jó, Ta-ya-pó ka-ma-ra - jó, Ta-ya-pó ka-ma-ra-jó, Ka-ma-ra - jó ka-ma-ra -

A2

T1

8

T2

8

já, Ta-pi-tó pa-la-pa-tá, pa-la-pa-tá pa-la-pa - tá, Ja-ka-tá ka-ma-ra-já, Ja-ka-tá ka-ma-ra -

+ Tbn.

ff

Bar.

Ah!

+ Bsn.

ff

B2

Ah!

188

For perusal only. Do not copy.

Please visit GraphitePublishing.com to purchase scores.

For perusal only. Do not copy.

Please visit GraphitePublishing.com to purchase scores.

194

S1

S2 *sfz* *sfz*
 tú, Uê, tô, cê, tá, tô - rê, kai - á Uê tô cê tá tô - rê, kai -

A1 Ta-ya-pó ka-ma-ra-jó, Ka-ma-ra - jó ka-ma-ra -

A2 jó, Ta-ya-pó ka-ma-ra-jó, Ta-ya-pó ka-ma-ra - jó,

For perusal only. Do not copy.

Please visit GraphitePublishing.com to purchase scores.

T1

T2 já, Ja-ka-tá ka-ma-ra-já, Ka-ma-ra-já, ka-ma-ra - já, Ja-ka-tá ka-ma-ra-já, Ja-ka-tá ka-ma-ra -

+ Sax.

Bar. Ah!

+ Hn. 3 Ah!

For perusal only. Do not copy.

Please visit GraphitePublishing.com to purchase scores.

194

For perusal only. Do not copy.

Please visit GraphitePublishing.com to purchase scores.

196

S1

S2

A1

A2

á Jé - ki - ri - tú - mú - rú - tú, Jé - ki - ri - tú - mú - rú - tú, Jé - ki - ri - tú - mú - rú - tú, tú - mú - rú - tú, tú - mú - rú -

jó, Uê, tô, cê, tá, tô - rê, Kai - á, Ta - ya - pó ka - ma - ra - jó, Ta - ya - pó ka - ma - ra -

sfz

T1

T2

Bar.

B2

For perusal only. Do not copy.

Please visit GraphitePublishing.com to purchase score

já, Ta - pi - tô pa - la - pa - tá, pa - la - pa - tá, pa - la - pa - tá, Uê, tô, cê, tá, tô - rê, Kai -

Ah!

Ah!

sfz

196

For perusal only. Do not copy.

Please visit GraphitePublishing.com to purchase scores.

For perusal only. Do not copy.

Please visit GraphitePublishing.com to purchase scores.

8
200

S1 + Vln. 1 *mf*
Ah!

S2 *f sfz* *sfz* *sfz*
tú - iá, cê tá tó - rê kai - á - iá, cê tá tó - rê kai - á - iá, cê tá tó - rê kai -

A1 jô!

A2 *sfz*
Ah! Uê, tô, cê, tá, tó - rê, Kai - á, Ta-ya-pó ka-ma-ra-jó, Ta-ya-pó ka-ma-ra - jó, Uê, tô, cê, tá, tó - rê, Kai -

T1 + Vc. *ff*
Ah!

T2 tá,

Bar. *mf*
Ah!

B2 + Cb. *mf*
Ah!

8
200

For perusal only. Do not copy.

Please visit GraphitePublishing.com to purchase scores.

For perusal only. Do not copy.

Please visit GraphitePublishing.com to purchase scores.

203

S1

Ah!

S2

á Já - tá - dé - a Já - tá - dé, Já - tá - dé - a Já - tá - dé - iá, cê tá tô - rê kai -

A1

A2

á, Tá - ya, Tá - ya, Sa - ba - rim - ba ka - ba - rim - ba ma - ra - jó, Uê, tô, cê, tá, tô - rê, Kai -

T1

Ah!

T2

Bar.

B2

203

For perusal only. Do not copy.

Please visit GraphitePublishing.com to purchase scores.

For perusal only. Do not copy.

Please visit GraphitePublishing.com to purchase scores.

For perusal only. Do not copy.

Please visit GraphitePublishing.com to purchase scores.

205

S1

S2

A1

A2

T1

T2

Bar.

B2

205

á Já-tá-dé-a Já-tá-dé, Já-tá-dé-a Já-tá - dé-ia, cê tá tô - rê kai - á - ia, cê tá tô - rê kai -

á, Ta-ya-pó ka-ma-ra-jó, Ta-ya-pó ka-ma-ra - jó, Uê, tô, cê, tá, tô - rê, Kai - á. Ta-ya-pó ka-ma-ra-jó, Ta-ya-pó ka-ma-ra-

Ah!

For perusal only. Do not copy.

Please visit GraphitePublishing.com to purchase scores.

For perusal only. Do not copy.

Please visit GraphitePublishing.com to purchase scores.

208

S1
Ah!

S2
á - iá, cê - tá tô - rê Kai - á, Já - tá - dé - a Já - tá - dé, Já - tá - dé - a Já - tá -

A1

A2
jó, Uê, tô, cê, tá, tô - rê, Kai - á, Tá - ya, Tá - ya, Sa - ba - rim - ba ka - ba - rim - ba ma - ra -

T1
Ah!

T2

Bar.
mf
Ah!

B2
mf
Ah!

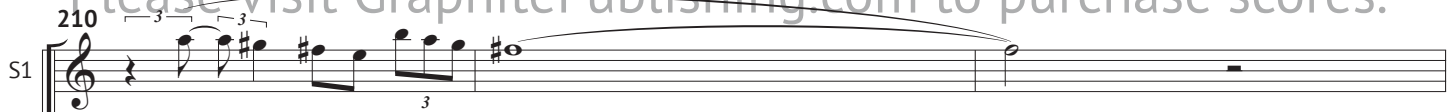
208

For perusal only. Do not copy.

Please visit GraphitePublishing.com to purchase scores.

For perusal only. Do not copy.


Please visit GraphitePublishing.com to purchase scores.

S1 


Ah! _____

S2 

A1 

A2 

T1 

T2 

Bar. 

B2 



For perusal only. Do not copy.

Please visit GraphitePublishing.com to purchase scores.

For perusal only. Do not copy.

Please visit GraphitePublishing.com to purchase scores.

213

S1

S2

A1

A2

T1

T2

Bar.

B2

213

á - iá, cê tá tô - rê kai - á!

Ta-ya-pó ka-ma-ra - jó, Ta-ya-pó ka-ma-ra -

á, Tá-ya, Tá-ya, Sa-ba-rim-ba ka-ba-rim-ba ma-ra - jó,

Uê, tô, cê, tá, tô - rê Kai -

já, Ta-pi - tô pa - la - pa - tá, pa - la - pa - tá, pa - la - pa tá, Uê, tô, cê, tá, tô - rê, Kai -

simile

Té-ké - ré ki-mé-ré - jé, Té-ké - ré ki-mé-ré - jé, Té-ké - ré ki-mé-ré - jé, ki-mé-ré - jé, ki-mé-ré,

For perusal only. Do not copy.

Please visit GraphitePublishing.com to purchase scores.

For perusal only. Do not copy.

Please visit GraphitePublishing.com to purchase scores.

215

S1 *mf* + Ob. Se tu que - res

S2

A1 *sfz* jó, Ta-ya-pó ka-ma-ra-jó, ka-ma-ra-jó ka-ma-ra - jó, Uê, tô, cê, tá, tô - rê, Kai -

A2 *sfz* Uê, tô, cê, tá, tô - rê, Kai -

T1 *sfz* á, Uê, tô, cê, tá, tô - rê, Kai - á,

T2 *sfz* á, Uê, tô, cê, tá, tô - rê, Kai - á, Ja-ka-tá ka-ma-ra-já, Ja-ka-tá ka-ma-ra -

Bar. *f* *sfz* *pp* jó! Tô! tê! tí! mê! tô - rê, Kai - á! Tú-rú-tú ka-rú-ta-tú, Tú-rú-tú ka-rú-ta -

B2

215

For perusal only. Do not copy.

Please visit GraphitePublishing.com to purchase scores.

For perusal only. Do not copy.

Please visit GraphitePublishing.com to purchase scores.

217

S1
ver a i-men - si - ão do céu e

S2

A1
á, Uê, tô, cê, tá, tô - rê, Kai - á, Ta-ya-pó ka-ma-ra-jó, Ta-ya-pó ka-ma-ra -

A2
á, Uê, tô, cê, tá, tô - rê, Kai - á,

T1
Ta-pi-tó pa-la-pa-tá, Ta-pi-tó pa-la-pa -

T2
já, Ja-ka-tá ka-ma-ra-já, Ka-ma-ra-já ka-ma-ra - já,

Bar.
tú, Tú-rú-tú ka-rú-ta-tú, ka-rú-ta-tú, ka-rú-ta - tú, Té-ké-ré ki-mé-ré-jé, Té-ké-ré ki-mé-re -

B2
Té-ké-ré ki-mé-ré-jé, Té-ké-ré ki-mé-ré -

217

For perusal only. Do not copy.

Please visit GraphitePublishing.com to purchase scores.

For perusal only. Do not copy.

Please visit GraphitePublishing.com to purchase scores.

219

S1
mar, re - fle - tin - do_a

S2

A1
jó, Tá-ya, Tá-ya, Sa-ba-rim-ba ka-ma-rim-ba ma-ra - jó Ta-ya-pó ka-yó-pó-lá, Ta-ya-pó ká-yó-pó-

A2

T1
tá, Ta-pi-tó pa-la-pa-tá, pa-la-pa-tá, pa-la-pa - tá Ja-ka-tá ka-ma-ra-já, Ja-ka-tá ka-ma-ra -

T2

Bar.
ff *sfz* *p*
jé, Êy! Êy! Êy! tô - cê! Té-ké-ré ki-mé-ré-jé, Té-ké-ré ki-mé-ré -

B2
jé, Tú-rú - tú ka - rú - ta - tú, ka - rú - ta - tú, ka - rú - ta - tú, Té-ké-ré ki-mé-ré-jé, Té-ké-ré ki-mé-ré -

219

Please visit GraphitePublishing.com to purchase scores.

For perusal only. Do not copy.

Please visit GraphitePublishing.com to purchase scores.

221

S1
pris - ma - ti - za - ção da luz so -

S2

A1
lá, Ta-ya-pó ka-ma-ra-jó, ka-ma-ra-jó, ka-ma-ra - jó, Ta-ya-pó ka-ma-ra-jó, Ta-ya-pó ka-ma-ra -

A2

T1
ff
já, Ja-ka - lá, Tô - ça, Tô - cê, Tô - ça, Ka-hu -

T2
ff
Ta-pi - tó pa-la-pa-tá, pa-la-pa-tá-pê, Ja-ka - lá, Tô - ça, Tô - cê, Tô - ça,

Bar.
jé, Tú-rú-tú ka-rú-ta-tú, ka-rú-ta-tú, ka-rú-ta - tú, Tú-rú-tú ka-rú-ta-tú, Tú-rú-tú!

B2
jé, Té-ké-ré ki-mé-ré-jé, ki-mé-ré-jé, ki-mé-ré - jé, Té-ké-ré ki-mé-ré-jé, Té-ké-ré ki-mé-ré -

221

Please visit GraphitePublishing.com to purchase scores.

For perusal only. Do not copy.

Please visit GraphitePublishing.com to purchase scores.

223

S1 lar, ras - ga_o co - ra -

S2

A1 jó, Tá-ya, Tá-ya, ka-ma-rá, Tá-ya, Tá-ya, ka-ma - rá, Ta-ya-pó ka-ma-ra - jó, Ta-ya-pó ka-ma-ra -

A2

T1

T2 *f* Ja - ka - tá ka-ma-ra - já, Ja - ka - tá ka-ma-ra - já, Ja - ka - tá ka-ma-ra - já, Ja - ka - tá ka-ma-ra -

Bar. Tú-rú-tú ka-rú-ta-tú, ka-rú-ta-tú ka-rú-ta -

B2 jé, Té-ké-ré ki-mé-ré - jé, Té-ké-ré ki-mé-ré - jé, Tú-rú-tú ka-rú-ta-tú, ka-rú-ta-tú ka-rú-ta -

223

10

Please visit GraphitePublishing.com to purchase scores.

For perusal only. Do not copy.

Please visit GraphitePublishing.com to purchase scores.

225

S1
cão, vem te de - bru -

S2

A1
jó, Ta - ya - pó ka - ma - ra - jó, ka - ma - ra - jó, ka - ma - ra - jó, Uê, tô, cê, tá, tô - rê, Kai -

A2

T1
Ta - pi - tó pa - la - pa - tá, pa - la - pa - tá, pa - la - pa -

T2
já, Ta - pi - tó pa - la - pa - tá, Ta - pi - tó pa - la - pa - tá,

Bar.
tú, Êy! Êy! Êy! tô - cê!

B2
jé, Tú - rú - tú ka - rú - ta - tú, ka - rú - ta - tú ka - rú - ta - tú, Té - ké - ré ki - mé - ré - jé, ki - mé - ré - jé, ki - mé - ré -

225

For perusal only. Do not copy.

Please visit GraphitePublishing.com to purchase scores.

For perusal only. Do not copy.

Please visit GraphitePublishing.com to purchase scores.

227

S1
çar so - bre a vas - ti -

S2

A1
á,

A2
Ta-ya-pó ka-ma-ra-jó, Ta-ya-pó ka-ma-ra - jó, Tá-ya, Tá-ya, ka-ma-rá, Tá-ya, Tá-ya, ka-ma-

T1
tá, Ja-ka-tá ka-ma-ra-já, Ja-ka-tá ka-ma-ra - já, Ja-ka-tá ka-ma-ra-já, Ja-ka-tá ka-ma-ra -

T2

Bar.
Gé! tô! tê! ti! mê! tô - ré, Kai - á! Té-ké-ré ki-mé-ré-jé, Té-ké-ré ki-mé-ré -

B2
jé, Tú-rú-tú ka-rú-ta-tú, Tú-rú-tú-ka-rú-ta - tú, Tú-rú-tú ka-rú-ta-tú, Tú-rú-tú ka-rú-ta -

227

For perusal only. Do not copy.

Please visit GraphitePublishing.com to purchase scores.

For perusal only. Do not copy.

Please visit GraphitePublishing.com to purchase scores.

229

S1
dão do meu pe - nar!

S2

A1

A2
rá, Tá-ya, Tá-ya, Sa-ba-rim-ba, ka-ma-rim-ba ma-ra - ká, Ta-ya-pó ka-ma-ra - jó, Ta-ya-pó ka-ma-ra -

T1
já, Ta-pi - tó pa-la-pa-tá, pa-la-pa-tá, pa-la-pa - tá, Ta-pi - tó pa-la-pa-tá, Ta-pi - tó

T2

Bar.
jé, Uai! lá - tá - lô, cá - tá, ma-ka -

B2
tú, Tú-rú - tú ka-rú - ta - tú, ka-rú - ta - tú, ka-rú - ta - tú, Té-ké-ré ki-mé-ré - jé, Té-ké-ré ki-mé-ré -

229

For perusal only. Do not copy.

Please visit GraphitePublishing.com to purchase scores.

For perusal only. Do not copy.

Please visit GraphitePublishing.com to purchase scores.

11

231

S1 *p* *simile*
Jé - ki - ri tú-mú-rú-tú, Jé - ki - ri tú-mú-rú -

S2 *p* *simile*
Jé - ki - ri tú-mú-rú-tú, Jé - ki - ri tú-mú-rú -

A1 *sfz*
Tá-ya, Tá-ya, Sa-ba-rim-ba, ka-ma-rim-ba, Sa-ba - rá, Uê, tô, cê, tá, tô - rê, Kai -

A2
jó, Tá-ya, Tá-ya, Sa-ba-rim-ba, ka-ma-rim-ba, Sa-ba - rá, Ta-ya-pó ka-ma-ra-jó, Ta-ya-pó ka-ma-ra -

T1
Ta-pi-tó pa-la-pa-tá, Ta-pi-tó pa-la-pa -

T2
Ja-ka-tá ka-ma-ra-já, Ka-ma-ra-já, ka-ma-ra - já,

Bar. *ff*
rê! Sor - ve to - do_o_o -

B2 *ff*
jé, Sor - ve to - do_o_o -

231

11

For perusal only. Do not copy.

Please visit GraphitePublishing.com to purchase scores.

For perusal only. Do not copy.

Please visit GraphitePublishing.com to purchase scores.

For perusal only. Do not copy.

Please visit GraphitePublishing.com to purchase scores.

233

S1
 tú, Jé - ki - ri - tú - mú - rú - tú, tú - mú - rú - tú, tú - mú - rú - tú, Jé - ki - ri - tú - mú - rú - tú, Jé - ki - ri - tú - mú - rú -

S2
 tú, Jé - ki - ri - tú - mú - rú - tú, tú - mú - rú - tú, tú - mú - rú - tú, Jé - ki - ri - tú - mú - rú - tú, Jé - ki - ri - tú - mú - rú -

A1
 á, Uê, tô, cê, tá, tô - rê, Kai - á, Ta - ya - pó ka - ma - ra - jó, Ta - ya - pó ka - ma - ra -

A2
 jó, Tá - ya, Tá - ya, Sa - ba - rim - ba, Ka - ma - rim - ba ma - ra - cá,

T1
 tá, Ja - ka - tá ka - ma - ra - já, Ja - ka - tá ka - ma - ra -

T2
 Ta - pi - tô pa - la - pa - tá, pa - la - pa - tá, pa - la - pa - tá,

Bar.
 lor que an - da a re - cen -

B2
 lor que an - da a re - cen -

233

For perusal only. Do not copy.

Please visit GraphitePublishing.com to purchase scores.

For perusal only. Do not copy.

Please visit GraphitePublishing.com to purchase scores.

235

S1
 tú, Jé - ki - ri - tú - mú - rú - tú, tú - mú - rú - tú, tú - mú - rú - tú, Jé - ki - ri - tú - mú - rú - tú, Jé - ki - ri - tú - mú - rú -

S2
 tú, Jé - ki - ri - tú - mú - rú - tú, tú - mú - rú - tú, tú - mú - rú - tú, Jé - ki - ri - tú - mú - rú - tú, Jé - ki - ri - tú - mú - rú -

A1
 jó, Ta - ya - pó ka - ma - ra - jó, ka - ma - ra - jó, ka - ma - ra - jó, Ta - ya - pó ka - ma - ra - jó, Ta - ya - pó ka - ma - ra -

A2
 Ta - ya - pó ka - ma - ra - jó, Ta - ya - pó ka - ma - ra -

T1
 já, Ja - ka - tá ka - ma - ra - já, Ka - ma - ra - já, ka - ma - ra - já

T2
 Ja - ka - tá ka - ma - ra - já, Ja - ka - tá ka - ma - ra -

Bar.
 der pe - las es - pi -

B2
 der pe - las es - pi -

235

For perusal only. Do not copy.

Please visit GraphitePublishing.com to purchase scores.

For perusal only. Do not copy.

Please visit GraphitePublishing.com to purchase scores.

237

S1

tú Jé - ki - ri - tú - mú - rú - tú, tú - mú - rú - tú, tú - mú - rú - tú, Jé - ki - ri - tú - mú - rú - tú, Jé - ki - ri - tú - mú - rú -

S2

tú Jé - ki - ri - tú - mú - rú - tú, tú - mú - rú - tú, tú - mú - rú - tú, Jé - ki - ri - tú - mú - rú - tú, Jé - ki - ri - tú - mú - rú -

A1

jó, Tá - ya, Tá - ya, Sa - ba - rim - ba, Ka - ma - rim - ba ma - ra - ká,

A2

jó, Tá - ya, Tá - ya, Sa - ba - rim - ba, Ka - ma - rim - ba ma - ra - ká,

T1

For perusal only. Do not copy.

T2

já, Ja - ka - tá ka - ma - ra - já, Ka - ma - ra - já, ka - ma - ra - já, Ja - ka - tá ka - ma - ra - já, Ja - ka - tá ka - ma - ra -

Bar.

nho - sas flo - ra - ções do meu so -

B2

nho - sas flo - ra - ções do meu so -

237

For perusal only. Do not copy.

Please visit GraphitePublishing.com to purchase scores.

For perusal only. Do not copy.

Please visit GraphitePublishing.com to purchase scores.

12

239

S1
tú, Uê, tô, cê, tá, tô - rê,

S2
tú, Uê, tô, cê, tá, tô - rê,

A1
mf
Vê se po - des ler nas

A2
mf
Vê se po - des ler nas

T1
8
Hum! Tum! Tum! Tum! Tum -

T2
8
já, Uê, tô, cê, tá, tô - rê, Hum! Tum! Tum! Tum! Tum!

Bar.
pp Hum! Tum! Tum! Tum! Tum -

B2
pp Hum! Tum! Tum! Tum! Tum -

239

12

For perusal only. Do not copy.

Please visit GraphitePublishing.com to purchase scores.

For perusal only. Do not copy.

Please visit GraphitePublishing.com to purchase scores.

For perusal only. Do not copy.

Please visit GraphitePublishing.com to purchase scores.

242

S1

S2

A1
su - as pul - sa - ções as bran - cas i - lu - sões elo quele - le

A2
su - as pul - sa - ções as bran - cas i - lu - sões elo quele - le

T1
hum! Tum! Tum! Tum! Tum - hum! Tum! Tum! Tum! Tum!

T2
hum! Tum! Tum! Tum! Tum! hum! Tum! Tum! Tum! Tum!

Bar.
hum! Tum! Tum! Tum! Tum - hum! Tum! Tum! Tum! Tum!

B2
hum! Tum! Tum! Tum! Tum - hum! Tum! Tum! Tum! Tum!

242

Please visit GraphitePublishing.com to purchase scores.

For perusal only. Do not copy.

Please visit GraphitePublishing.com to purchase scores.

246

S1 *p simile* Jé - ki - ri - tú - mú - rú - tú, Jé - ki - ri - tú - mú - rú -

S2 *p simile* Jé - ki - ri - tú - mú - rú - tú, Jé - ki - ri - tú - mú - rú -

A1 *p sfz* diz no seu ge - mer... E que não... Uê, tô, cê, tá, tô - rê, Kai -

A2 *p simile* diz no seu ge - mer... E que não... Ta - ya - pó ka - ma - ra - jó, Ta - ya - pó ka - ma - ra -

T1 *p simile* Tum! Tum! Tum! Tum! Tum! Tum! Tum! Tum! Ja - ka - tá ka - ma - ra - já, Ja - ka - tá ka - ma - ra -

T2 Tum! Tum! Tum! Tum! Tum! Tum! Tum! Tum!

Bar. *p simile* Tum! Tum! Tum! Tum! Tum! Tum! Tum! Tum! po - de a ti di -

B2 *p simile* Tum! Tum! Tum! Tum! Tum! Tum! Tum! Tum! po - de a ti di -

246

For perusal only. Do not copy.

Please visit GraphitePublishing.com to purchase scores.

For perusal only. Do not copy.

Please visit GraphitePublishing.com to purchase scores.

249

S1
tú, Jé - ki - ri - tú - mú - rú - tú, tú - mú - rú - tú, tú - mú - rú - tú, Jé - ki - ri - tú - mú - rú - tú, Jé - ki - ri - tú - mú - rú -

S2
tú, Jé - ki - ri - tú - mú - rú - tú, tú - mú - rú - tú, tú - mú - rú - tú, Jé - ki - ri - tú - mú - rú - tú, Jé - ki - ri - tú - mú - rú -

A1
simile á, Uê, tô, cê, tá, tô - rê, Kai - á, Ta - ya - pó ka - ma - ra - jó, Ta - ya - pó ka - ma - ra -

A2
jó, Tá - ya, Tá - ya, Sa - ba - rim - ba, Ka - ma - rim - ba ma - ra - cá,

T1
já, Já - ka - tá ka - ma - ra - já, Já - ka - tá ka - ma - ra -

T2
p Ta - pi - tó, pa - la - pa - tá, pa - la - pa - tá, pa - la - pa - tá,

Bar.
zer nas pal - pi - ta -

B2
zer nas pal - pi - ta -

249

For perusal only. Do not copy.

Please visit GraphitePublishing.com to purchase scores.

For perusal only. Do not copy.

Please visit GraphitePublishing.com to purchase scores.

251

S1
 tú, Jé - ki - ri - tú - mú - rú - tú, tú - mú - rú - tú, tú - mú - rú - tú Jé - ki - ri - tú - mú - rú - tú, Jé - ki - ri - tú - mú - rú -

S2
 tú, Jé - ki - ri - tú - mú - rú - tú, tú - mú - rú - tú, tú - mú - rú - tú Jé - ki - ri - tú - mú - rú - tú, Jé - ki - ri - tú - mú - rú -

A1
 jó, Ta - ya - pó ka - ma - ra - jó, ka - ma - ra - jó, ka - ma - ra - jó, Ta - ya - pó ka - ma - ra - jó, Ta - ya - pó ka - ma - ra -

A2
 Ta - ya - pó ka - ma - ra - jó, Ta - ya - pó ka - ma - ra -

T1
 já, Ja - ka - tá ka - ma - ra - já, Ka - ma - ra - já, ka - ma - ra - já,

T2
simile
 Ta - pi - tó pa - la - pa - tá, Ta - pi - tó pa - la - pa -

Bar.
 ções! Ou - ve - o bran - da -

B2
 ções! Ou - ve - o bran - da -

251

For perusal only. Do not copy.

Please visit GraphitePublishing.com to purchase scores.

For perusal only. Do not copy.

Please visit GraphitePublishing.com to purchase scores.

253

S1
 tú, Jé - ki - ri - tú - mú - rú - tú, tú - mú - rú - tú, tú - mú - rú - tú, Jé - ki - ri - tú - mú - rú - tú, Jé - ki - ri - tú - mú - rú -

S2
 tú, Jé - ki - ri - tú - mú - rú - tú, tú - mú - rú - tú, tú - mú - rú - tú, Jé - ki - ri - tú - mú - rú - tú, Jé - ki - ri - tú - mú - rú -

A1
 jó, Tá - ya, Tá - ya, Sa - ba - rim - ba, Ka - ma - rim - ba ma - ra - cá,

A2
 jó Tá - ya, Tá - ya, Sa - ba - rim - ba, Ka - ma - rim - ba ma - ra - cá,

T1

T2
 tá, Ta - pi - tó pa - la - pa - tá, pa - la - pa - tá, pa - la - pa - tá, Ja - ka - tá ka - ma - ra - já, Ja - ka - tá ka - ma - ra -

Bar.
 men - te do - ce - men - te pal - pi -

B2
 men - te do - ce - men - te pal - pi -

253

For perusal only. Do not copy.

Please visit GraphitePublishing.com to purchase scores.

For perusal only. Do not copy.

Please visit GraphitePublishing.com to purchase scores.

255

S1
tú, Uê, tô, cê, tá, tô - rê,

S2
tú, Uê, tô, cê, tá, tô - rê,

A1
mf Cas - to e pur - pu - ral, num tre - no ves - pe -

A2
mf Cas - to e pur - pu - ral, num tre - no ves - pe -

T1
p Hum! *mf* Tum! Tum! Tum! Tum - hum! *p*

T2
p já, Uê, tô, cê, tá, tô - rê, Hum! *mf* Tum! Tum! Tum! Tum - hum! *p*

Bar.
tar, Hum! *mf* Tum! Tum! Tum! Tum - hum! *p*

B2
tar, Hum! *mf* Tum! Tum! Tum! Tum - hum! *p*

255

For perusal only. Do not copy.

Please visit GraphitePublishing.com to purchase scores.

For perusal only. Do not copy.

Please visit GraphitePublishing.com to purchase scores.

259

S1

S2

A1
ral, mais pu - ro que u - ma cân - di - da ves -

A2
ral, mais pu - ro que u - ma cân - di - da ves -

T1
mf Tum! Tum! Tum! Tum - hum! *p* Tum! Tum! Tum! Tum!

T2
mf Tum! Tum! Tum! Tum - hum! *p* Tum! Tum! Tum! Tum!

Bar.
mf Tum! Tum! Tum! Tum - hum! *p* Tum! Tum! Tum! Tum!

B2
mf Tum! Tum! Tum! Tum - hum! *p* Tum! Tum! Tum! Tum!

259

For perusal only. Do not copy.

Please visit GraphitePublishing.com to purchase scores.

For perusal only. Do not copy.

Please visit GraphitePublishing.com to purchase scores.

262

S1

S2

A1

A2

tal!

tal!

BORDER | CROSSING

T1

p *simile*

Ja - ka - tá ka - ma - ra - já, Ja - ka - tá ka - ma - ra - já, Ja - ka - tá ka - ma - ra - já, ka - ma - ra - já, ka - ma - ra -

T2

Bar.

p *simile*

Té - ké - ré ki - mé - ré - já, Té - ké - ré ki - mé - ré - já, Té - ké - ré ki - mé - ré - já, ki - mé - ré - já, ki - mé - ré -

B2

p *simile* *sfz*

Té - ké - ré ki - mé - ré - já, Té - ké - ré ki - mé - ré - já, Uê! tó! cê! tá! tó - rê, Kai -

262

Please visit GraphitePublishing.com to purchase scores.

For perusal only. Do not copy.

Please visit GraphitePublishing.com to purchase scores.

264

S1

S2

A1 *mf* *simile*
 Tá-ya, Tá-ya, Sa-ba-rim-ba, Ka-ma-rim-ba ma-ra - cá, Ta-ya-pó ka-ma-ra-jó, Ta-ya-pó ka-ma-ra -

A2

T1 *sfz* *sfz*
 já, Uê, tô, cê, tá, tô - rê, Kai - á Uê, tô, cê, tá tô - rê, Kai -

T2 *sfz* *simile* *sfz*
 Uê, tô, cê, tá, tô - rê, Kai - á Uê, tô, cê, tá tô - rê, Kai -

Bar. *p*
 já, Tú-rú-tú ka-rú-ta-tú, Tú-rú-tú ka-rú-ta -

B2 *p* *dim.*
 á, Tú-rú-tú ka-rú-ta-tú, ka-rú-ta-tú, ka-rú-ta - tú,

264

For perusal only. Do not copy.

Please visit GraphitePublishing.com to purchase scores.

For perusal only. Do not copy.

13

+ Fl., Ob.

266

S1

Ras - ga-o, que_hás de ver lá den - tro_a

S2

A1

A2

T1

T2

Bar.

B2

13

266

For perusal only. Do not copy.

Please visit GraphitePublishing.com to purchase scores.

For perusal only. Do not copy.

Please visit GraphitePublishing.com to purchase scores.

268

S1
dor a so - lu - çar!

S2

A1
á, Ta-ya-pó ka-ma-ra-jó, Ta-ya-pó ka-ma-ra - jó, Tá-ya, Tá-ya, Sa-ba-rim-ba Ka-ma-rim-ba ma-ra -

A2

T1
já, Ta-pi-tó pa-la-pa-tá, Ta-pi-tó pa-la-pa - tá, Ta-pi-tó pa-la-pa-tá, pa-la-pa-tá, pa-la-pa -

T2
já,

Bar.
jé, Tú-rú-tú ka-rú-ta-tú, Tú-rú-tú ka-rú-ta - tú, Êy! Êy! Êy! tô -

B2
Té-ké-ré ki-mé-ré-jé, Té-ké-ré ki-mé-ré - jé, Tú-rú-tú ka-rú-ta-tú, ka-rú-ta-tú, ka-rú-ta -

268

For perusal only. Do not copy.

Please visit GraphitePublishing.com to purchase scores.

For perusal only. Do not copy.

Please visit GraphitePublishing.com to purchase scores.

270

S1
Sob o pe - so de u - ma cruz de

S2

A1
cá, Ta-ya-pó ka-yó-pó-lá, Ta-ya-pó ka-yó-pó - lá, Ta-ya-pó ka-ma-ra-jó, ka-ma-ra-jó, ka-ma-ra -

A2

T1
8 tá, Ja-ka-tá ka-ma-ra-já, Ja-ka-tá ka-ma-ra - já, Já - cá -

T2
8 Ta-pi - tó pa - la - pa - tá, pa - la - pa - tá - pê, Já - cá -

Bar.
p cê, Té-ké-ré ki-mé-ré - jé, Té-ké-ré ki-mé-ré - jé Tú-rú-tú ka-rú - ta - tú, ka-rú - ta - tú, ka-rú - ta -

B2
tú, Té-ké-ré ki-mé-ré - jé, Té-ké-ré ki-mé-ré - jé, Té-ké-ré ki-mé-ré - jé, ki-mé-ré - jé, ki-mé-ré -

270

For perusal only. Do not copy.

Please visit GraphitePublishing.com to purchase scores.

For perusal only. Do not copy.

Please visit GraphitePublishing.com to purchase scores.

272

S1
lá - gri - mas, cho - rar!

S2

A1
jó, Ta-ya-pó ka-ma-ra-jó, Ta-ya-pó ka-ma-ra - jó, Tá-ya, Tá-ya, ka-ma-rá, Tá-ya, Tá-ya, ka-ma-

A2

T1
lá, Tô - çá, Tô - cê, Tô - çá, Ka-hú - ê!

T2
lá, Tô - çá, Tô - cê, Tô - çá, Ja-ka-tá ka-ma-ra-já, Ja-ka-tá ka-ma-ra -

Bar.
tú, Tú-rú-tú ka-rú-ta-tú, Tú-rú-tú!

B2
jé, Té-ké-ré ki-mé-ré-jé, Té-ké-ré ki-mé-ré - jé, Té-ké-ré ki-mé-ré-jé, ki-mé-ré-jé, ki-mé-ré -

272

For perusal only. Do not copy.

Please visit GraphitePublishing.com to purchase scores.

For perusal only. Do not copy.

Please visit GraphitePublishing.com to purchase scores.

274

S1

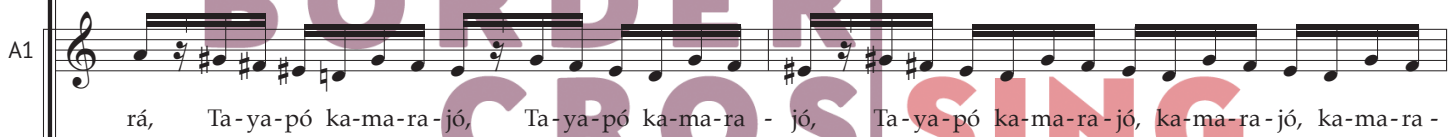


An - jos a can - tar

S2



A1



rá, Ta-ya-pó ka-ma-ra-jó, Ta-ya-pó ka-ma-ra - jó, Ta-ya-pó ka-ma-ra-jó, ka-ma-ra-jó, ka-ma-ra -

A2



T1



For perusal only. Do not copy.

Please visit GraphitePublishing.com to purchase scores.

T2



já, Ja-ka-tá ka-ma-ra-já, Ja-ka-tá ka-ma-ra - já, Ta-pi-tó pa-la-pa-tá, Ta-pi-tó pa-la-pa -

Bar.




Tú-rú-tú ka-rú-ta-tú, ka-rú-ta-tú, ka-rú-ta - tú! Êy! Êy! Êy! tô -

B2



já, Tú-rú-tú ka-rú-ta-tú, ka-rú-ta-tú, ka-rú-ta - tú, Tú-rú-tú ka-rú-ta-tú, ka-rú-ta-tú, ka-rú-ta -

274



For perusal only. Do not copy.

Please visit GraphitePublishing.com to purchase scores.

For perusal only. Do not copy.

Please visit GraphitePublishing.com to purchase scores.

276

S1
pre - ces di - vi - nais,

S2

A1
jó, Uê, tô, cê, tá, tô - rê, Kai - á,

A2
Ta-ya-pó ka-ma-ra-jó, Ta-ya-pó ka-ma-ra -

T1
Ta-pi-tó pa-la-pa-tá, pa-la-pa-tá, pa-la-pa - tá, Ja-ka-tá ka-ma-ra-já, Ja-ka-tá ka-ma-ra -

T2
tá,

Bar.
cê! Ah! Uê! tô! cê! tá! tô - rê! Kai -

B2
tú, Tú-rú-tú ka-rú-ta-tú, ka-rú-ta-tú, ka-rú-ta - tú, Té-ké-ré ki-mé-ré-jé, Té-ké-ré ki-mé-ré -

276

For perusal only. Do not copy.

Please visit GraphitePublishing.com to purchase scores.

For perusal only. Do not copy.

Please visit GraphitePublishing.com to purchase scores.

278

S1 Deus a ri - ti - mar seus po - bres

S2

A1

A2 jó, Tá-ya, Tá-ya, ka-ma-rá, Tá-ya, Tá-ya, ka-ma - rá, Tá-ya, Tá-ya, Sa-ba-rim-ba ka-ma-rim-ba, Sa-ba -

T1 já, Ja-ka-tá ka-ma-ra-já, Ja-ka-tá ka-ma-ra - já, Ta-pi-tó pa-la-pa-tá, pa-la-pa-tá, pa-la-pa -

T2

Bar. *p* á, Té-ké-ré ki-mé-ré-jé, Té-ké-ré ki-mé-ré - jé,

B2 jé, Té-ké-ré ki-mé-ré-jé, Té-ké-ré ki-mé-ré - jé, Té-ké-ré ki-mé-ré-jé, ki-mé-ré-jé, ki-mé-ré -

278

For perusal only. Do not copy.

Please visit GraphitePublishing.com to purchase scores.

For perusal only. Do not copy.

14

280

mf *simile* *cresc.*

S1 ais. _____ *Jé - ki - ri - tú - mú - rú - tú, Jé - ki - ri - tú - mú - rú - tú, Jé - ki - ri - tú - mú - rú -*

S2 *mf* *simile* *cresc.*

A1 *Jé - ki - ri - tú - mú - rú - tú, Jé - ki - ri - tú - mú - rú - tú, Jé - ki - ri - tú - mú - rú -*

A2 *Ta - ya - pó ka - ma - ra - jó, Ta - ya - pó ka - ma - ra - jó, Ta - ya - pó ka - ma - ra - jó, Ta - ya - pó ka - ma - ra -*

T1 *tá, Ta - pi - tó pa - la - pa - tá, Ta - pi - tó pa - la - pa - tá, Ja - ka - tá ka - ma - ra - já, Ja - ka - tá ka - ma - ra -*

T2 *Ta - pi - tó pa - la - pa - tá, Ja - ka - tá ka - ma - ra - já, Ja - ka - tá ka - ma - ra -*

Bar. *en dehors ff* *mf* *cresc.*

B2 *Uai! lá - tá - lô, Má - ká - ré! Ki - mé - ré - jé, Té - ké - ré ki - mé - ré - jé, Té - ké - ré ki - mé - ré -*

ff *cresc.* *sfz*

jé, Té - ké - ré ki - mé - ré - jé, Êh! Lá! Uê, tô, cê, tá, tô - rê, Kai -

14

280

For perusal only. Do not copy.

Please visit GraphitePublishing.com to purchase scores.

For perusal only. Do not copy.

Please visit GraphitePublishing.com to purchase scores.

282

S1
 tú, Jé - ki - ri - tú - mú - rú - tú, Jé - ki - ri - tú - mú - rú - tú, Jé - ki - ri - tú - mú - rú - tú, Jé - ki - ri - tú, Jé - ki -

S2
 tú, Jé - ki - ri - tú - mú - rú - tú, Jé - ki - ri - tú - mú - rú - tú, Jé - ki - ri - tú - mú - rú - tú, Jé - ki - ri - tú, Jé - ki -

A1
 jó, Ta - ya - pó ka - ma - ra - jó, Ta - ya - pó ka - ma - ra - jó, Ta - ya - pó ka - ma - ra - jó, Ta - ya - pó ka - ma - ra -

A2
 jó, Ta - ya - pó ka - ma - ra - jó, Ta - ya - pó ka - ma - ra - jó, Ta - ya - pó ka - ma - ra - jó, Ta - ya - pó ka - ma - ra -

T1
 já Ja - ka - tá ka - ma - ra - já, Ja - ka - tá ka - ma - ra - já, Ja - ka - tá ka - mã - na, hã, Ja - ka - tá ka - mã - na,

T2
 já Ja - ka - tá ka - ma - ra - já, Ja - ka - tá ka - ma - ra - já, Ja - ka - tá ka - mã - na, hã, Ja - ka - tá ka - mã - na,

Bar.
 jé, Té - ké - ré ki - mé - ré - jé, Té - ké - ré ki - mé - ré - jé, ki - mé - ré - jé, ki - mé - ré - jé,

B2
 á, Uê, tô, cê, tá, tô - rê, Kai - á, Êh! Êh! Êh!

282

For perusal only. Do not copy.

Please visit GraphitePublishing.com to purchase scores.

For perusal only. Do not copy.

allargando

284

S1

ri - tú, Jé - ki - ri - tú, Jé - ki - ri - tú, Jé - ki - ri - tú, Jé - ki - ri - tú, Jé - ki - ri - tú, Jé - ki - ri - tú, Jé - ki,

S2

ri - tú, Jé - ki - ri - tú, Jé - ki - ri - tú, Jé - ki - ri - tú, Jé - ki - ri - tú, Jé - ki - ri - tú, Jé - ki - ri - tú, Jé - ki - ri - tú, Jé - ki,

A1

jó, ka - ma - ra - jó, ka - ma - ra - jó, ka - ma - ra - jó, ka - ma - ra - jó, ka - ma - ra - jó, ka - ma - ra - jó, ka - ma - ra - jó, ka - ma - rê,

A2

jó, ka - ma - ra - jó, ka - ma - ra - jó, ka - ma - ra - jó, ka - ma - ra - jó, ka - ma - ra - jó, ka - ma - ra - jó, ka - ma - ra - jó, ka - ma - rê,

T1

Ras - - - - - ga - o, - - - - - que há s de

T2

Ras - - - - - ga - o, - - - - - que há s de

Bar.

Ah! Uê, tô, cé, tá, tô - rê Kai - á! que há s de

B2

Ras - - - - - ga - o, - - - - - que há s de

allargando

284

Please visit GraphitePublishing.com to purchase scores.

Largo

For perusal only. Do not copy. *rall.*

286

S1 *ff* Ah! Ah! *fff*

S2 *ff* Ah! Ah! *fff*

A1 *ff* Ah! Ah! *fff*

A2 *ff* Ah! Ah! *fff*

T1 *ff* ver! Ah! *fff*

T2 *ff* ver! Ah! *fff*

Bar. *ff* ver! Ah! *fff*

B2 *ff* ver! Ah! *fff*

BORDER CROSSING

Largo

rall.

286

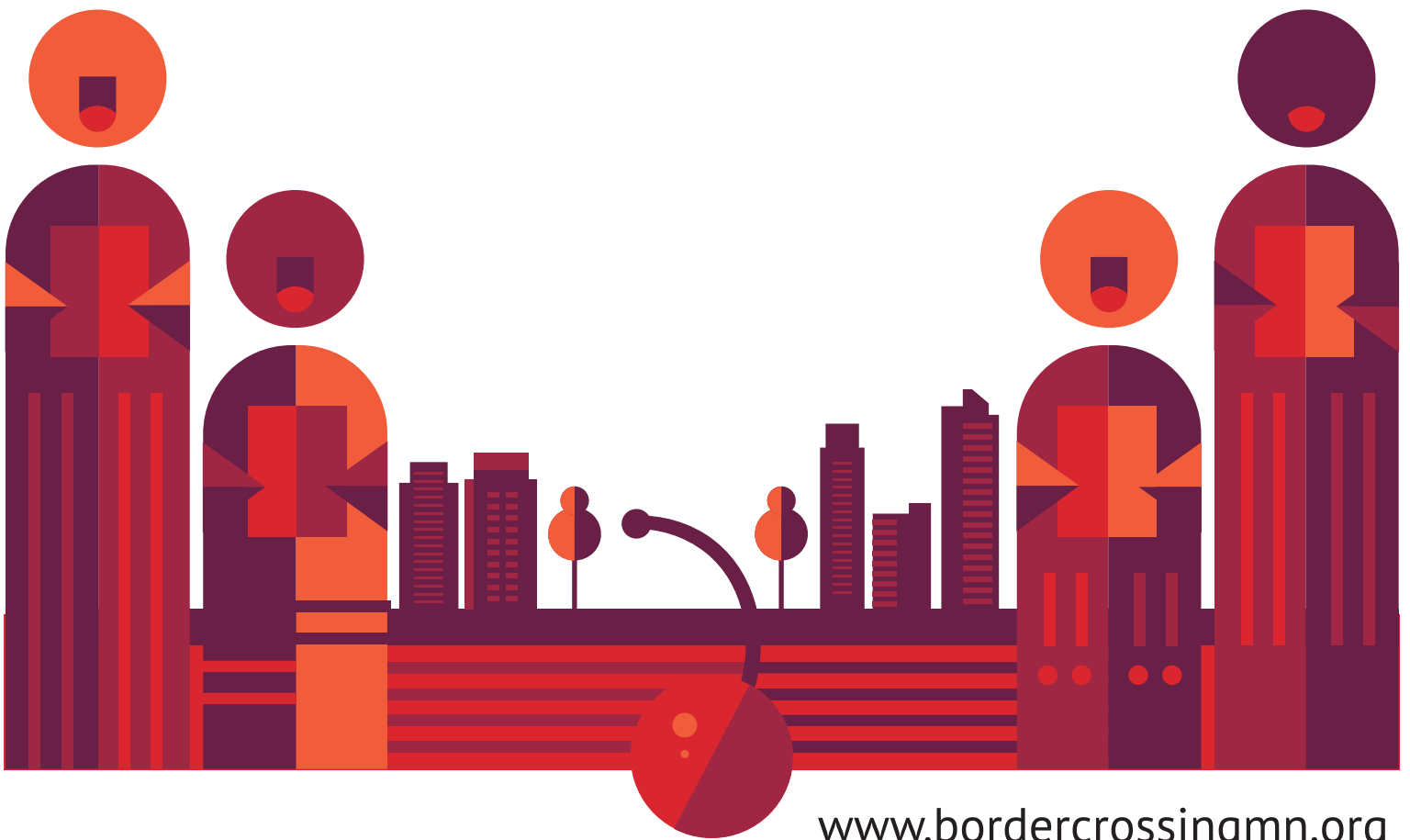
(Pno.)

51

For perusal only. Do not copy. Please visit GraphitePublishing.com to purchase scores.

**BORDER
CROS|SING**

Founded in 2017, Minnesota-based Border CrosSing envisions fundamental change in classical music culture, so that every concert, every audience, and the artists on stage truly reflect the cultural reality in which we live. Border CrosSing's work provides opportunities for people from different communities to understand each other in new ways through Puentes, a concert series centering Latinx culture and music; Heritage Choir, an inclusive community chorus with a focus on exploring cultural heritage; educational programming; and communal singing events. For more information visit www.bordercrossingmn.org



www.bordercrossingmn.org