

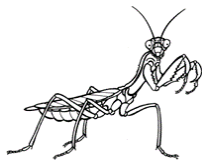
For Scott Leaman and the Lincoln High School Women's Chorale

Nature Walks Set I

For SSAA Chorus

Poems by Ogden Nash
Music by Timothy Hoekman

1. The Squid
2. The Manatee
3. The Praying Mantis
4. The Abominable Snowman



*Timothy
Hoekman Music*

1. The Squid

Ogden Nash

Timothy Hoekman

For perusal purposes only. Do not copy.

Grandly (♩ = c. 72)

f

Soprano
What hap - py ap - pel - la - tions these Of birds and beasts in

Alto
What hap - py ap - pel - la - tions these Of birds and beasts in

rit. **Twice as fast** (♩ = c. 72)

mf

S
com - pa - nies! A shrewd - ness of apes, a sloth of bears, A

A
com - pa - nies! A shrewd - ness of apes, a sloth of bears, A

7

S
skulk of fox - es, a huske of hares. An ex - al - ta - tion 'tis of larks, And

A
skulk of fox - es, a huske of hares. An ex - al - ta - tion 'tis of larks, And

11

S
pos - si - bly a grin — of sharks, apes,

A
pos - si - bly a grin — of sharks. A shrewd - ness of apes, a

For perusal purposes only. Do not copy.

17

S bears, fox - es, hares. An *p*

A sloth of bears, A skulk of fox - es, a huske of hares. An *p*

23 *cresc.* *f*

S ex - al - - ta - - tion of larks,

S2 ex - al - - ta - - tion 'tis of larks,

A ex - al - - ta - - tion tis of larks, *f* *mf*

27 *mf* *p* **Tempo I** (♩ = c.72)

S pos - si - bly grin of sharks, But I de - clare a

S2 pos - si - bly a grin of sharks, But I de - clare a

A pos - si - bly a grin of sharks, But I de - clare a

31 *rit.* *mf*

S squirt of squid I should not like to be a mid. But

A squirt of squid I should not like to be a - mid. But

Twice as fast ($\text{♩} = c. 72$)

34

S I de - clare a squirt of squid I should not like to — be a - mid. Skin

A I de - clare a squirt of squid I should not like to — be a - mid. Skin

For perusal purposes only. Do not copy.

38

S div - ers — bold - ly swim through se - pi - a, — But I can think of

A div - ers — bold - ly — swim through se - pi - a, — But I can think of

42

S noth - ing creep - i - er, of noth - ing creep - i - er. *mp* *pp*

S2 noth - ing creep - i - er, of noth - ing creep - i - er. *mp* *pp*

A noth - - - ing creep - i - er, of noth - ing creep - i - er. *mp* *pp*

(rhyme with "sepia")

Timothy Hoekman Music

For perusal purposes only. Do not copy.

2. The Manatee

Ogden Nash

Timothy Hoekman

Innocently (♩ = c. 69)

For perusal purposes only. Do not copy.

Soprano 1 *mf*
The man - a - tee _____ is harm - less And con - spic - u - ous - ly charm - less.

Soprano 2 *mf*
The man - a - tee _____ is harm - less And con - spic - u - ous - ly charm - less.

Alto *mf*
The man - a - tee _____ is harm - less And con - spic - u - ous - ly charm - less.

S 1 *p*
— Luck - i - ly the man - a - tee Is quite de - void of van - i - ty. —

S 2 *p*
— Luck - i - ly the man - a - tee Is quite de - void of van - i - ty. —

A *p*
— Luck - i - ly the man - a - tee Is quite de - void of van - i - ty. —

Faster (♩ = c. 58)

S 1 *cresc.* *rit.* *f* *port.* *mf a tempo*
Man - a - tee, man - a - tee, man - a - tee, The man - a - tee _____ is

S 2 *cresc.* *rit.* *f* *port.* *mf a tempo*
Man - a - tee, man - a - tee, man - a - tee, The man - a - tee man - a - tee

A *cresc.* *rit.* *f* *port.* *mf a tempo*
Man - a - tee, The man man

(a very light and late portamento)

13 *rit.*

S 1 harm - less And con - spic - u - ous - ly charm - less.

S 2 man - a - tee man - a - tee man - a - tee man - a - tee man - a - tee man - a - tee *rit.*

A man man man man man man *rit.*

19 *a tempo*

S 1 Luck-i - ly the man - a - tee is quite de - void of van - i - ty.

S 2 *a tempo* man - a - tee man - a - tee man - a - tee van - i - ty.

A *a tempo* man man man van - i - ty.

Tempo I (♩ = c. 69)

24

S 1 The man - a - tee is harm - - - less.

S 2 The man - a - tee is harm - - - less.

A The man - a - tee is harm - - - less.

For perusal purposes only. Do not copy.

3. The Praying Mantis

Ogden Nash

Timothy Hoekman

Sinisterly (♩ = c. 63) **ff**

Soprano: From whence ar - rived the pray - ing man - tis? From out - er space, _____

Alto: From whence ar - rived the pray - ing man - tis? or lost At -

6 **mp** **f** **mp**

S: I glimpse the grim, green met - al mug _____ That masks this

A: **ff** **mp** **f** **mp**

lan - tis? I glimpse the grim, green met - al mug _____ That masks this

11 **f**

S: pseu - do - saint - ly bug, _____ Or - thop - ter - ous, _____ al - so car - niv - o - rous,

A: **f**

pseu - do - saint - ly bug, _____ Or - thop - ter - ous, _____ al - so car - niv - o - rous,

17 **mf** *rit.* **p** *a tempo* *poco*

S: And faint - ly whis - per, Lord de - liv - er us, _____ de - liv - er _____ us.

A: **mf** *rit.* **p** *a tempo* *poco*

And faint - ly whis - per, Lord de - liv - er us, _____ de - liv - er _____ us.

5

S 1
nev - er seen an a - bom - i - na - ble snow - man,

S 2
bom bom bom bom bom bom bom bom bom bom bom bom bom bom bom

A 1
bom bom bom bom bom bom bom bom bom bom bom bom bom bom

A 2
bom bom bom bom bom bom bom bom bom bom bom bom bom bom

7

S 1
f
a - bom - i - na - ble snow - man,

S 2
bom bom bom a - bom - i - na - ble snow - man, a - bom - i - na - ble snow - man,

A 1
bom bom bom a - bom - i - na - ble snow - man, a - bom - i - na - ble snow - man,

A 2
bom - bom bom bom a - bom - i - na - ble snow - man, a - bom - i - na - ble

10

S 1
mf
snow - man, I've nev - er seen an a - bom - i - na - ble snow - man,

S 2
mf
snow - man, I've nev - er seen an a - bom - i - na - ble snow - man,

A 1
mf
snow - man, I've nev - er seen an a - bom - i - na - ble snow - man,

A 2
mf
snow - man, I've nev - er seen an a - bom - i - na - ble snow - man,

12

S 1 *f* I'm hop-ing not to see one, hop - ing,

S 2 *mp* I'm hop-ing not to see one, hop - ing, hop - ing,

A 1 *mp* I'm hop-ing not to see one, hop - ing, hop - ing,

A 2 *mp* I'm hop-ing not to see one, hop - ing, hop - ing, hop - ing,

15

S 1 *mp* hop - ing not to see one, *f* a - bom-i - na-ble snow - man,

S 2 *f* hop - ing not to see one, a - bom-i - na-ble snow - man,

A 1 *f* hop - ing not to see one, a - bom-i - na-ble snow - man,

A 2 *f* hop - ing not to see one, a - bom-i - na-ble

18

S 1 snow - man,

S 2 snow - man,

A 1 snow - man,

A 2 *mp* snow - man, bom bom bom bom bom bom bom bom bom bom

20

S 1

S 2 *mp*
bom bom bom bom bom bom bom bom bom bom bom bom bom bom bom bom

A 1 *mp*
bom bom bom bom bom bom bom bom bom bom bom bom

A 2
bom bom bom bom bom bom bom bom bom bom bom bom bom bom bom bom

22

S 1 *mf*
I'm al - so hop - - - ing,

S 2
bom bom bom bom bom bom bom bom bom bom bom bom bom bom bom bom

A 1
bom bom bom bom bom bom bom bom bom bom bom bom bom bom bom bom

A 2
bom bom bom bom bom bom bom bom bom bom bom bom bom bom bom bom

24

S 1
if I do,

S 2
bom bom bom bom bom bom bom bom bom bom

A 1
bom bom bom bom bom bom bom bom bom bom

A 2
bom bom bom bom bom bom bom bom bom bom

25

S 1 I'm al - so hop - ing, if I do, That it will be a wee one.

S 2 *mf* I'm al - so hop - ing, if I do, That it will be a wee one.

A 1 *mf* I'm al - so hop - ing, if I do, That it will be a wee one.

A 2 *mf* I'm al - so hop - ing, if I do, That it will be a wee one. hop - ing,

28

S 1 hop - ing, That it will be a wee one. A -

S 2 *mp* hop - ing, hop - ing, That it will be a wee one. *sub. p*

A 1 *mp* hop - ing, hop - ing, That it will be a wee one. *sub. p*

A 2 *mp* hop - ing, hop - ing, That it will be a wee one. *sub. p*

31

S 1 bom - i - na - ble snow - man, snow - man,

S 2 *f* A - bom - i - na - ble snow - man, snow - man,

A 1 *f* A - bom - i - na - ble snow - man, snow - man,

A 2 *f* A - bom - i - na - ble snow - man,

33

S 1

S 2

A 1

A 2 *p*

bom bom bom bom bom bom — bom bom bom bom bom

34

S 1

S 2 *p*

A 1 *p*

A 2

Ah

bom bom bom bom bom bom bom bom bom

bom bom bom bom bom bom bom bom bom

bom bom bom bom bom bom bom bom bom

bom bom bom bom bom bom bom bom bom

35

S 1

S 2

A 1

A 2

a - wee one.

bom bom bom bom bom — bom bom bom a wee one.

bom bom bom bom bom bom bom a wee one.

bom bom bom bom bom bom bom a wee one.

Composer Timothy Hoekman has written in many genres, but most of his works include the voice. His works have been published by Theodore Presser, Colla Voce, Plymouth Music Company, Recital Publications, and Classical Vocal Reprints. He was named the 2002 MTNA-Shepherd Distinguished Composer of the Year for his song cycle *To Make a Prairie*, commissioned by the South Dakota Music Teachers Association. Other commissions have come from the Rawlins Piano Trio, the Coastal Carolina Chamber Music Festival, Georgia Southern University, and First Presbyterian Church of Tallahassee, among others. His works have been recorded for Albany Records, Azica Records, and Mark Records.

Hoekman is a highly experienced performer, teacher, and coach, having performed as soloist and collaborative pianist in the U.S., Canada, Australia, and Europe. From 1988 to 2011 he was on the music staff of Glimmerglass Opera in Cooperstown, NY, and has also worked for South Georgia Opera, Florida Grand Opera, Des Moines Metro Opera, Michigan Opera Theater, Opera Grand Rapids, and the Peter Harrower Summer Opera Workshop. He currently spends summers as a lieder coach for the American Institute of Musical Studies in Graz, Austria. He was a professor at Florida State University from 1984 to 2022, teaching collaborative piano, coaching graduate voice majors, and teaching a variety of language and vocal literature classes for singers and pianists. He holds degrees from the University of Michigan, Peabody Conservatory, and Calvin College. He has served as adjudicator for vocal, piano, and composition competitions.

For more information about Timothy Hoekman and his compositions, visit timothyhoekman.com.



[Hoekman scores available from GraphitePublishing.com](http://GraphitePublishing.com)

Emily's Words	voice, fl., cl., vc., pno.
God Rest You Merry, Gentlemen	high voice, orchestra
Il est né, le divin enfant	high voice, orchestra
Infant Holy, Infant Lowly	voice, orchestra
Let the Children Come to Me	SATB chorus, organ
Lo, How a Rose E'er Blooming	SATB, sop., fl., organ
Nature Walks, set I	SSAA chorus
Nature Walks, set II	TTBB chorus
North Carolina Songs	voice, harp, str. trio
Serenade	tenor, piano
Seven Housman Songs	voice, piano
She Loves Me, She Loves Me Not	baritone, piano
Sing to the Lord a New Song	SATB chorus, organ
The Last Invocation	high voice, piano
Three Poems of William Butler Yeats	soprano, piano trio
What Love Is This	SATB chorus, organ
Your Devoted Hugo	baritone, piano

Arias, duets, & choruses from the oratorio *Prophet Songs*

Timothy
Hoekman *Music*