

The Infinity of Space  
SSAA, S solo, piano  
JH-GRL22

Ritika Bhattacharjee

pdf - \$1.95  
printed - \$4.00

# The Infinity of Space

Ritika Bhattacharjee

for SSAA, S solo, piano



COMPOSE  
LIKE A GIRL

Illustration: KT Thompson

*jh* music

## Text:

When I was a girl, I tried to imagine the infinity of space  
It seemed like I could only go so far and then I'd have to start again.  
As a young woman I felt I could reach into space, and that seemed closer  
Now I'm a mother, and I don't want my children to go  
When they dream of traveling to galaxies far, far away  
But the infinite beyond captivates all  
Imagine, the infinity of space!  
Into the infinite, we'll go!

- Shayla Rivera

## About the Text:

Written by Shayla Rivera, the Director of the ENGR[X] Program at Texas A&M University and former NASA engineer, the text represents an ever-evolving relationship with infinite abundance as the narrator confronts her own dreams of traveling to space as she grows from a little girl to a teenager and now reflects on that dream as an adult and mother. The poem captures both the limitations we encounter as women when we dream about our futures, as well as the limitlessness that occurs when we stay attached to our dreams despite those limitations.

## Performance Notes

If possible, have the choir surround the audience in a mixed formation (don't separate voice parts) so that each voice (particularly during measures 89-100 where each part sings "infinite" repeatedly) will sound infinite to the audience. For the pianist, measure 81 and onward may be viewed as quasi-improvisational, so long as the feeling of 3-against-2 and the highest and lowest pitches of each phrase are kept the same.

## About the Music:

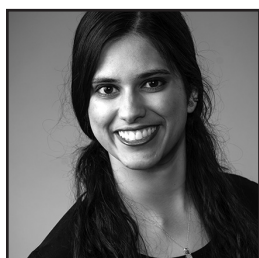
The ordinary person, when asked to imagine an infinite number of something, will imagine countless multiples of the object in question. However, engineers are trained to view infinity as one large number for calculation purposes. Both views of infinity are included in the work: from measures 89-96, all voice parts sing "the infinite" on different notes, at different times, representing the first concept. Immediately after in measures 97-100, every voice part joins on the E $\flat$ , representing the singular view of infinity. The opening piano theme conveys the childlike excitement felt when dreaming of outer space. Just as we remain the same yet transformed by our experiences, the piano theme at measure 62 is similar to the opening but colored by the narrator's trepidation. The distinct shift at measure 81 reflects the narrator's intentional shift to an optimistic perspective. Optimism, though sometimes equated with naïveté, is anything but: faith in the unknown becomes a more intentional choice as we grow.

- Ritika Bhattacharjee

Dear conductor,

You can support these composers, diversify your concerts, and push towards equality by programming music from the #ComposeLikeAGirl series. Inviting the composer into the rehearsal process through a zoom or in-person workshop or Q & A session is an incredible experience for all involved. Be sure to notify and invite the composer to any performances of the work, and submit a PDF of the concert program to JH Music to ensure the composer receives performances royalties from ASCAP. Thank you!

~ Jocelyn Hagen



Ritika Bhattacharjee is a composer, pianist, and vocalist who performs in jazz combos and big bands, plays for contemporary dance productions with Ventana Ballet, and underscores fully improvised musicals at Merlin Works, The Hideout, The Fallout, and ColdTowne Theatre. Her multi-media composition portfolio includes the scores for three short films, a video game, an iOS app, a string quartet, a musical, and a symphony commission from Austin Balcones Orchestra. She received her B.S. in Chemical Engineering from Texas A&M University in 2022, where she founded and served as the president and conductor of Ingeniare, the A&M Student Engineering Chorus, and served as the band leader and pianist for Binomial Rhapsody, an engineering instrumental ensemble that composed music from math equations. During her undergraduate study, she was the lead jazz

vocalist for the Corps of Cadets Aggieland Orchestra, performing scores from the big-band era on tour. She currently works as a business consultant in Austin, TX, and will receive her graduate diploma in composition from the European Academy of Film Scoring in 2024.

To my mother and Christina, the scientists who changed my understanding of infinity.

# The Infinity of Space

# Do not photocopy.

SSAA choir, piano, and soprano soloist

Text by Shayla Rivera

Ritika Bhattacharjee

# For perusal only.

*Excited, hopeful* ♩ = 60

Soprano 1

Soprano 2

Alto 1

Alto 2

*Excited, hopeful* ♩ = 60

Piano

# Do not photocopy.

# For perusal only.



*jh* music

© 2024 JH Music. All Rights Reserved.

Check out the Compose Like A Girl Podcast! Listen to Jocelyn Hagen interview incredible female-identifying composers about their process, finding artistic truth, and leading with curiosity. These inspirational interviews are completed by excellent recordings.



5

*mp*

S1 Ah!

S2 Ah

A1 Ah!

A2 Ah!

*mp*

Pedal *sim.*

S1 *f* When I was a girl, I

S2 *f* When I was a girl, I

A1 *f* When I was a girl, I

A2 *f* When I was a girl, I

13

S1  
 tried to i-ma-gine the in - fin-i-ty of space! It seemed like I,

S2  
 tried to i-ma-gine the in - fin-i-ty of space! It seemed like I,

A1  
 tried to i-ma-gine the in - fin-i-ty of space! It seemed like I

A2  
 tried to i-ma-gine the in - fin-i-ty of space! It seemed like I

17

S1  
 It seemed like I could on-ly go so far,

S2  
 It seemed like I could on-ly go so far,

A1  
 could, on-ly go so far,

A2  
 could, on-ly go so far,

21

S1  
Go so far, Be - fore I'd have to \_\_\_\_\_

S2  
Go so far, I'd have to \_\_\_\_\_

A1  
Go so far, I'd have to \_\_\_\_\_

A2  
Go so far, I'd have to \_\_\_\_\_

25

S1  
start a - gain

S2  
start a - gain

A1  
start a - gain

A2  
start a - gain

**A** *Pensive*, ♩ = 54

29

*Rit.*

S1

S2

A1

A2

*mp*

*mp*

As a young wo - man

As a young wo - man,

**A** *Pensive*, ♩ = 54

*Rit.*

*mp*

*mp*

Jocelyn Chagen

33

S1

S2

A1

A2

*mp*

*mp*

I felt I could reach in-to space, And

I felt I could reach in-to space, And

I felt I could reach in-to space,

I felt I could reach in-to space,

*mp*

*mp*

Do not photocopy.

For perusal only.

38

S1 that, seemed clo - ser.

S2 that, seemed clo - ser.

A1 And that seemed clo - ser.

A2 And that seemed clo - ser.

*mp*  
Pedal harmonically

45

Solo *mf*  
Now I'm a moth-er, and I don't want my chil - dren to go,

S1

S2

A1

A2

*p*  
Pedal harmonically

51

S1 *f* And I don't want my chil - dren to go,

S2 *f* And I don't want my chil - dren to go,

A1 *f* And I don't want my chil - dren to go,

A2 *f* And I don't want my chil - dren to go,

*all* *for rehearsal only*

jocelyn chagen

57

S1 When they dream of trav - 'ling to ga - lax - ies far a -

S2 When they dream of trav - 'ling to ga - lax - ies far a -

A1 When they dream of trav - 'ling to ga - lax - ies far a -

A2 When they dream of trav - 'ling to ga - lax - ies far a -

**B** *Con Moto*, ♩ = 64

S1  
way, \_\_\_\_\_

S2  
way, \_\_\_\_\_

A1  
way, \_\_\_\_\_

A2  
way, \_\_\_\_\_

**B** *Con Moto*, ♩ = 64

*p* play

jo e e l y n t h a g e n

65

S1  
Ah! \_\_\_\_\_

S2

A1

A2

*mp*

*Pedal sim.*

69

S1 *mp* Ah!

S2 *mp* Ah!

A1 *mp* Ah!

A2 *mp* Ah!

*mp*

jocelyn Chagen

S1 Ah!

S2 Ah!

A1 Ah!

A2 Ah!

*mp*

Pedal sim.

*L'istesso tempo*

S1

S2

A1

A2

Do not photocopy.  
For perusal only.

*L'istesso tempo*

**C** *Appassionato* ♩ = 128  
(♩ = ♩.)

S1

S2

A1

A2

*mf*  
But the in-fin-ite be-yond cap - ti - vates all!

*mf*  
But the in-fin-ite be-yond cap - ti - vates all!

Do not photocopy.  
For perusal only.

**C** *Appassionato* ♩ = 128  
(♩ = ♩.)

*mf*

*Flutter pedal*

85

S1 *mf*  
 But the in-fin-ite be-yond cap-ti-vates all! The

S2 *mf*  
 But the in-fin-ite be-yond cap-ti-vates all!

A1

A2

Piano accompaniment for measures 85-88, featuring chords in the right hand and a bass line in the left hand.

89

S1  
 in-fin-ite \_\_\_\_\_ The in-fin-ite \_\_\_\_\_ The

S2  
 The in-fin-ite The in-fin-ite

A1  
 The in-fin-ite \_\_\_\_\_ The in-fin-ite \_\_\_\_\_

A2  
 The in-fin-ite \_\_\_\_\_ The in-fin-ite \_\_\_\_\_

Piano accompaniment for measures 89-92, featuring a more active right hand with eighth notes and a steady bass line.

93

S1 in - fin - ite \_\_\_\_\_ The in - fin - ite \_\_\_\_\_ The

S2 \_\_\_\_\_ The in - fin - ite \_\_\_\_\_ The in - fin - ite

A1 \_\_\_\_\_ The in - fin - ite \_\_\_\_\_ The in - fin - ite \_\_\_\_\_

A2 \_\_\_\_\_ The in - fin - ite \_\_\_\_\_ The in - fin - ite \_\_\_\_\_

97

S1 in - fin - ite \_\_\_\_\_ The in - fin - ite \_\_\_\_\_

S2 \_\_\_\_\_ The in - fin - ite \_\_\_\_\_ The in - fin - ite \_\_\_\_\_

A1 \_\_\_\_\_ The in - fin - ite \_\_\_\_\_ The in - fin - ite \_\_\_\_\_

A2 \_\_\_\_\_ The in - fin - ite \_\_\_\_\_ The in - fin - ite \_\_\_\_\_

101

S1 *f* I - ma - gine! — In - fin-i-ty — of space!

S2 *f* I - ma - gine! — In - fin-i-ty — of space!

A1 *f* I - ma - gine! — In - fin-i-ty — of space!

A2 *f* I - ma - gine! — In - fin-i-ty — of space!

*f*

105

S1 I - ma - gine! — In - fin-i-ty — of space!

S2 I - ma - gine! — In - fin-i-ty — of space!

A1 I - ma - gine! — In - fin-i-ty — of space!

A2 I - ma - gine! — In - fin-i-ty — of space!

*f*

109

S1 *ff* In - to the in - fin - te

S2 *ff* In - to the in - fin - ite

A1 *ff* In - to the in - fin - ite

A2 *ff* In - to the in - fin - ite

*ff*

113

S1 we'll go!

S2 we'll go!

A1 we'll go!

A2 we'll go!

*Dedicated to all first responders who valiantly and selflessly risk their lives to help, rescue, protect and heal people around the world.*

# Do not photocopy. Somewhere Right Now For perusal only.

For SSAA choir and piano

Text by Lark Underwood

Marguerite Samuel

*Allegretto* ♩ = 100

G C/G G

Piano *mp*

(Sus. pedal ad. lib.)

5 Em Am7 G(add2)/B C D7

Do not photocopy.  
For perusal only.



*jh* music

© 2024 JH Music. All Rights Reserved.

Check out the Compose Like A Girl Podcast! Listen to Jocelyn Hagen interview incredible female-identifying composers about their process, finding artistic truth, and leading with curiosity. These inspirational interviews are completed by excellent recordings.



Another piece from the Compose Like a Girl Series

Marguerite Samuel

Somewhere Right Now

JH-GRL23

9 *Freely and expressively* ♩ = 100

*mp*

Do not photocopy.  
For perusal only.

S1  
right now

S2  
Some - where right now Some -

A1  
Some - where right now Some -

A2  
Some - where right now Some -

9 *Freely and expressively* ♩ = 100

G C/G G

13 *p*

S1  
Some - where right now. Some - where right

S2  
where right now.

A1  
where. Some - where, some - where right now.

A2  
where. Some - where, some - where right now.

Em Am7 G(add2)/B C D7

Another piece from the Compose Like a Girl Series

Marguerite Samuel

Somewhere Right Now

JH-GRL23

17

Do not photocopy.  
For perusal only.

S1 *pp* now, oo calm - ing

S2 *pp* holds, holds a cas - ual - ty calm - ing

A1 *mp* An E-M-T holds a cas - ual - ty calm - ing

A2 *mp* An E-M-T holds, holds, holds a cas - ual - ty calm - ing

17

G C/G G C/G G

22

S1 pan - ic in the midst of tra - ge - dy.

S2 pan - ic in the midst of tra - ge - dy.

A1 pan - ic in the midst of tra - ge - dy. *mf* A grate - ful smile

A2 pan - ic in the midst of tra - ge - dy. *mf* A grate - ful smile

25

Do not photocopy.  
For perusal only.

Am7 D/E Em D/E Em C

25

# COMPOSE LIKE A GIRL



Check out the Compose Like A Girl Podcast with Jocelyn Hagen!

Listen to Jocelyn interview incredible female-identifying composers about their process, finding artistic truth, and leading with curiosity. These inspirational interviews are completed by excellent recordings.



## Other works on the Compose Like a Girl Series:

JH-GRL01	Jocelyn Hagen	Standing Side by Side	SATB div. choir, piano
JH-GRL02	Suzy Johnson	A Respectable Bird	3-part treble choir, B $\flat$ clarinet, piano
JH-GRL03	Liv Grace	Hear Me Roar	SSAA a cappella choir
JH-GRL04	Sherry Blevins	Looking for Light	SSA choir, piano
JH-GRL05	Sherry Blevins	If I Call to You, My Love	SATB div., solo, a cappella choir
JH-GRL06	Jennifer Lucy Cook	Blow, Blow, Thou Winter Wind	SSA choir, tamb., hand drum
JH-GRL07	Patti Arntz	A Quilt of Snow (arr. of Norwegian folk tune)	2-part treble, flute, piano
JH-GRL08	Grace Becker	Known	SATB choir, soloist, piano
JH-GRL09	Amelia Ouversen	A Departing Blessing	SATB choir, C instrument
JH-GRL10	B.E. Boykin	The Star-Spangled Banner (arr.)	SSAA a cappella choir
JH-GRL11	Grace Brigham	Love Isn't Static	round for equal voices
JH-GRL12	Grace Brigham	Life Has a Loveliness	SATB div. choir, piano
JH-GRL13	Mary Montgomery Koppel	The Last Invocation	SATB div. choir, piano
JH-GRL14	Erika Malpass	meditation on a winter palette	SSAA a cappella choir
JH-GRL16	Anna Vtipil	Aurora	SSAA div. a cappella choir
JH-GRL17	Johanna Malmberg	Vanheim	SSSAATTBB a cappella choir
JH-GRL18	Ellen Voth	The Harbor and the Sea	SSAA, piano
JH-GRL18.1	Ellen Voth	The Harbor and the Sea	SSAA, piano, B $\flat$ clarinet
JH-GRL19	Amy Gordon	Mars in Retrograde	SSA, piano
JH-GRL20	Amy Gordon	In the Morning	SATB, piano
JH-GRL21	Tara Mack	Good Morning	SATB div. a cappella choir
JH-GRL22	Ritika Bhattacharjee	The Infinity of Space	SSAA, S solo, piano
JH-GRL23	Marguerite Samuel	Somewhere Right Now	SSAA, piano
JH-GRL24	Emily Drum	Star Light, Star Bright	SATB div. a cappella choir
JH-GRL25	Ashley Eyre	I Would Live In Your Love	SA div. choir, piano
JH-GRL26	Ashley Eyre	Let It Be Forgotten	SSAA a cappella choir
JH-GRL31	MaryAnne Muglia Smith	Can You Hear My Heart Sing?	SSA, piano



LET THE WORLD KNOW

## #ComposeLikeAGirl

The Compose Like A Girl Choral Series seeks to empower composers who identify as women through mentorship, editorial direction, publication, and promotion. Compose Like A Girl titles are selected by Jocelyn Hagen, published through JH Music, and distributed by Graphite Publishing. Composers in the series receive a 50% royalty on the sale of each copy.