

The Gift to Sing
GP-W006
SATB, piano

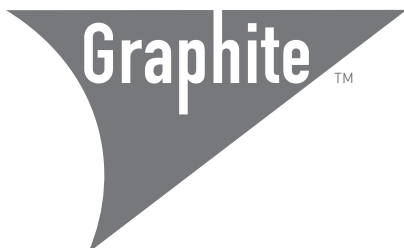
Reginal Wright

pdf download \$2.15
printed \$4.00

Reginal Wright

The Gift to Sing

for SATB choir and piano



notable. elevated.

www.graphitepublishing.com

Virtual Consortium featuring:

University of North Texas - Dr. Jessica Napoles, Director
Tarleton State University - Dr. Troy Robertson, Director
University of Central Missouri - Dr. Adam Zrust, Director
Colleyville Heritage High School - Thomas Rinn, Director
Grand Prairie Fine Arts Academy - Joel Duarte, Director
Mansfield High School - Reginal Wright, Director

Text:

Sometimes the mist overhangs my path,
And blackening clouds about me cling;
But, oh, I have a magic way
To turn the gloom to cheerful day
I softly sing.

And if the way grows darker still,
Shadowed by Sorrow's somber wing,
With glad defiance in my throat,
I pierce the darkness with a note,
And sing, and sing.

I brood not over the broken past,
Nor dread whatever time may bring;
No nights are dark, no days are long,
While in my heart there swells a song,
And I can sing.

- *James Weldon Johnson (1871-1938)*

The Gift to Sing

for SATB choir and piano

James Weldon Johnson (1871- 1938)

Reginal Wright

Freely (♩ = 70)

Piano

mp smooth and connected

pedal harmonically

The piano introduction consists of two systems of music. The first system is in 4/4 time and features a melody in the right hand with a triplet of eighth notes and a bass line in the left hand with a triplet of eighth notes. The second system continues the melody and bass line, with a fermata over the final measure. Performance instructions include 'smooth and connected' and 'pedal harmonically'.

7 ♩ = 50

mp

smearing with pedal

The piano accompaniment for measures 7-10 is in 6/8 time. It features a steady eighth-note pattern in the right hand and a bass line in the left hand. The instruction 'smearing with pedal' is written below the bass line.

11 *mp*

S Some - times the mist o - ver hangs my path,

A Some - times the mist o - ver hangs my path,

T Some - times the mist o - ver hangs my path,

B Some - times the mist o - ver hangs my path,

The vocal staves for Soprano (S), Alto (A), Tenor (T), and Bass (B) are shown for measures 11-14. Each part has the lyrics 'Some - times the mist o - ver hangs my path,'. The music is in 6/8 time and marked *mp*.

11

The piano accompaniment for measures 11-14 is in 6/8 time. It continues the eighth-note pattern from the previous section. The right hand has a melody with some grace notes, and the left hand has a steady bass line.

14

For perusal purposes only. Do not copy.

S and black - en-ing, black - en-ing clouds a -

A and black - en-ing, black - en-ing clouds a -

T black - en-ing clouds a -

B black - en-ing black - en-ing clouds a

17

For perusal purposes only. Do not copy.

S bout me cling. But, Oh, *mf*

A bout me cling. But, Oh, *mf*

T bout me cling. But, Oh, oh *mf*

B bout me cling. But, Oh, *mf*

20

S I, I have a mag - ic way, — to turn the gloom, —

A I have a mag - ic way, — to turn the gloom, —

T I, A mag - ic way, — to

B I, A mag - ic way, — to

20

24

S to cheer - ful day I soft - ly sing *mp*

A to cheer - ful day I soft - ly sing. *mp*

T turn the gloom, — cheer - ful day I soft - ly sing. *mp*

B turn the gloom, — cheer - ful day *mp*

24

28

S For perusal purposes only. Do not copy.

A

T *mp* And if the way grows dark - er still, _____

B *mp* And if the way grows dark - er still, _____

28

Piano accompaniment for measures 28-31, including bass and treble clefs.

32

S *mp* Shad - owed by sor - row's som - ber

A *mp* Shad - owed by sor - row's som - ber

T

B *mp* Shad - owed by sor - row's som - ber

32

Piano accompaniment for measures 32-35, including bass and treble clefs.

35

S wing, with glad, *mf*

A wing, with glad, *mf*

T som - ber wing, with glad, with *mf*

B som - ber wing, with glad, with *mf*

35

38

S Ah, _____

A Ah, _____

T glad de - fi - ance in my throat, _____ to

B glad de - fi - ance in my throat, _____ to

38

41

S *For perusal purposes only. Do not copy.*
 to pierce the dark - ness with a note,

A
 to pierce the dark - ness with a note,

T
 pierce the dark - ness with a note,

B
 pierce the dark - ness with a note,

41

Piano accompaniment for measures 41-43, featuring a steady eighth-note bass line and chords in the right hand.

44

S *cresc poco a poco*
 And sing, and

A *cresc poco a poco*
 sing,

T *cresc poco a poco*
 And sing,

B *cresc poco a poco*
 sing,

44

Piano accompaniment for measures 44-46, with a *cresc poco a poco* marking. The right hand features chords and the left hand has a walking bass line.

47 *rit.* *ff*

S *ff*
sing.

A *ff*
sing.

T *ff*
sing.

B *ff*
sing.

ff

rit.

50 *a tempo*

S

A

T

B

a tempo

mf

54

S For perusal purposes only. Do not copy.

A *mf* _____
 Sing, and sing.

T _____ notable. elevated.

B _____



54

Piano accompaniment for measures 54-57.

58

S For perusal purposes only. Do not copy.

A *mf* _____
 Sing, and sing.

T *mf* _____
 Sing, and sing. sing.

B *mf* _____ notable. elevated.
 Sing, and sing.



58

Piano accompaniment for measures 58-61.

62 *mf*

S Sing, and sing, sing and

A Sing and sing.

T Sing and sing.

B Sing and sing.

62

66 *f* rit.

S sing, and sing.

A Sing and sing, and

T Sing and sing, and

B Sing and sing, and

66 *f* rit.

70 *mf* *mp*

S *mf* Sing. *mp*

A *mf* sing. *mp*

T *mf* sing. *mp*

B *mf* sing. *mp*

70 *mp*

73 ♩ = 72 *mp*

S The brok-en past,

A *mp* The brok-en past,

T *mp* I brood not o-ver the bro-ken past, _____

B *mp* I brood not o-ver the bro-ken past, _____

73 ♩ = 72 *mp*

77

S *mf* I sing.

A *mf* sing.

T *mf* No

B *mf* No

77

mf

*roll if necessary

81

S *mp* Ah,

A *mp* Ah,

T nights are dark, no days are long, while in my heart there swells a song.

B nights are dark, no days are long, while in my heart there swells a song.

81

85 rit.

S And I sing. And I sing. And

A And I sing. And I sing. And

T And I sing. And I sing. And

B And I sing. And I sing. And

85 rit.

$\text{♩} = 50$

89 *f stagger breathe*

S Sing. sing.

A *f stagger breathe* sing. Sing. sing. sing. and

T *f stagger breathe* sing. Sing. sing. sing.

B *f stagger breathe* sing. sing.

89 $\text{♩} = 50$

f

93

S Sing and I can sing, *f*

A sing, I can sing, *f*

T sing I can sing, *f*

B sing I can sing, *f*

96 *rit.* *ff*

S I can sing! *ff*

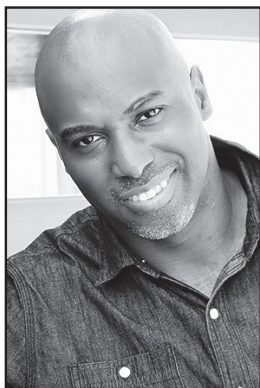
A I can sing! *ff*

T I can sing! *ff*

B I can sing! *ff*

96 *rit.* *ff*

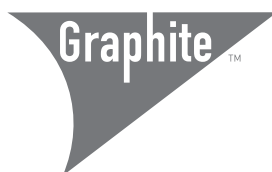
Reginal Wright



Reginal Wright has served over 20 years as a public school teacher. As an educator, Reginal has earned many awards including Outstanding Teacher, Who's Who Among America's Teachers, and the Secondary Educator of the Year Award. Reginal has performed music throughout Europe and the United States. As a conductor, he is sought after as a clinician in both middle and high school and has enjoyed the opportunity to conduct honor choirs throughout the United States. As a composer, Reginal's works have been commissioned by middle school, high school, college, and professional choirs. His works have been performed by All-State Choirs and invited convention choirs. His "Invictus" was performed in the 2021 ACDA National Convention and by the 2022 Texas All-State Tenor-Bass Choir. His "Where are the Bodies" was performed at Carnegie Hall in collaboration with Dallas-based Turtle Creek Chorale. Reginal's works are published and distributed through Graphite Publishing, BriLee, Carl Fisher, Graphite, Hal Leonard, Oxford University Press, Santa Barbara Music Publishing, and Reginal Wright Music. Reginal received both his Bachelor's and Master's of Music Education Degrees from Stephen F. Austin State University in Nacogdoches, Texas. Most recently, he was the head choral director at Mansfield High School and is currently on the music staff at Baylor University. Reginal resides in Arlington, Texas with his wife, Renetta, son, Gabrien, daughter, Reece, and Yorkie, Cooper.

Other choral works for mixed voices from Graphite Publishing:

Eric William Barnum	GP-B008	The White Birds	SATB, a cappella
Eric William Barnum	GP-B010	Conflagration	SATB, piano
Abbie Betinis	GP-B004	Blessed Be the Lord, My Rock	SAB, piano, organ, or a cappella
B.E. Boykin	GP-B022	Holding the Light	SATB, piano
B.E. Boykin	GP-B024	It's a Long Way	SATB, piano
Jennifer Lucy Cook	GP-C009	They Are Mother	SATB div., SA soli, piano
Jennifer Lucy Cook	GP-C012	How Can I Keep From Singing?	SATB, piano
Dessa and Jocelyn Hagen	GP-D023	Controlled Burn	SATB, orchestra or chamber ens.
Dessa and Jocelyn Hagen	GP-D026	Look Out Above	SATB, a cappella, soli, body percussion
Christine Donkin	GP-D019	In Flanders Fields	SATB, a cappella
Christine Donkin	GP-D020	In Paradisum	SSAATTBB, a cappella
Jocelyn Hagen	GP-H003	I Lift Up My Eyes (Psalm 121)	SSATB, a cappella
Jocelyn Hagen	GP-H014	To See the Sky	SATB, piano
Christopher Harris	GP-H015	Alleluia, For This Day	SATB (div), piano
Christopher Harris	GP-H016	Were You There?	SATB, a cappella
Christopher Harris	GP-H018	He's Able!	SATB (div), piano
Isaac Lovdahl	GP-L002	They Brought a Joyful Song	SATB (div), piano
Isaac Lovdahl	GP-L006	Though the great Waters sleep	SATB (div), piano
Luke Mayernik	GP-M004	Emblem	SATB, S solo, piano, violin, cello
Luke Mayernik	GP-M005	IKON	SSAATTBB, a cappella
Paul John Rudoj	GP-R013	Gamaya	SATB, opt. djembe
Paul John Rudoj	GP-R014	Stillness and the Night	SATB, a cappella
Joshua Shank	GP-S001	Color Madrigals (6 movement cycle)	SATB, a cappella
Joshua Shank	GP-S004	Daughter Ecstatic	SATB, soli quartet, a cappella
Timothy C. Takach	GP-T001	'Twas in the Moon of Wintertime	SATB, a cappella
Timothy C. Takach	GP-T010	Neither Angels, Nor Demons, Nor Powers	SSATBB, a cappella
Takach and Hagen	GP-T016	This is How You Love (multi-movement)	SATB, a cappella
Joe Twist	GP-T020	Hymn of Ancient Lands	SATB (div), S solo a cappella
Joe Twist	GP-T021	Weep, O Mine Eyes	SSAATTBB a cappella
Ellen Gilson Voth	GP-V002	Across the empty square	SATB, piano
Dale Warland	GP-W001	Always Singing	SATB (div), a cappella
Dale Warland	GP-W003	Sed Amore (But by Love)	SATB (div), piano
Reginal Wright	GP-W006	The Gift to Sing	SATB, piano
Reginal Wright	GP-W007	Tides	SATB, violin, viola, piano
Reginal Wright	GP-W008	Life's Mirror	SATB, piano



notable. elevated.

www.graphitepublishing.com