

Home on the Range  
GP - T007  
2 part treble, piano

arr. Timothy C. Takach

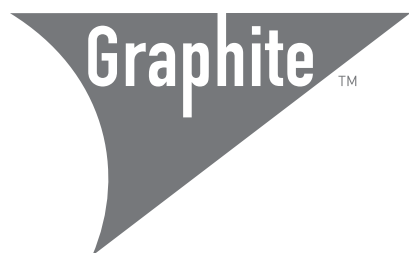
pdf download - \$2.15  
printed - \$3.40

arr. Timothy C. Takach

# Home on the Range

for 2 part treble voices and piano

To Jayne Windnagel and the Children's Choir of the Church of St. Michael's



notable. elevated.

[www.graphitepublishing.com](http://www.graphitepublishing.com)

# Home on the Range

for 2 part treble voices and piano

American Folk Song

arr. Timothy C. Takach (2007)

Anonymous

**Piano**

$\text{♩} = 92$

6

13

*mp* *mf*

Give me a home, \_\_\_\_\_

13

*mp* *p* *mp*

20

*mp* *mf*

give me a home. \_\_\_\_\_

20

*p*

Graphite™

notable. elevated.

For questions about this piece and to report performances, contact  
Timothy C. Takach at [tim@timothyctakach.com](mailto:tim@timothyctakach.com).

© 2007 Graphite Publishing. All Rights Reserved.  
For permission to copy visit [GraphitePublishing.com](http://GraphitePublishing.com).

26

For perusal purposes only. Do not copy.

*mf*

Oh, give me a

*mf*

*p*

*p*

Graphite™

notable.elevated.

32

home where the buf - fa - lo roam, Where the deer and the

32

36

an - te - lope play, Where sel - dom is heard a dis -

*mp*

For perusal purposes only. Do not copy.

41

cour - ag - ing word And the skies are not cloud - y all day.

*mf*

Graphite™

notable.elevated.

46 *f*  
Home, home on the range Where the deer and the

46 *mf*

52 an - te - lope play Where sel - dom is heard a dis - cour - ag - ing

52 *p* *mp*

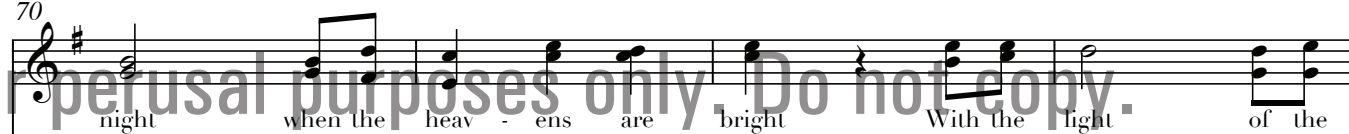
58 word And the skies are not cloud - y all day.

58 *f* *p*

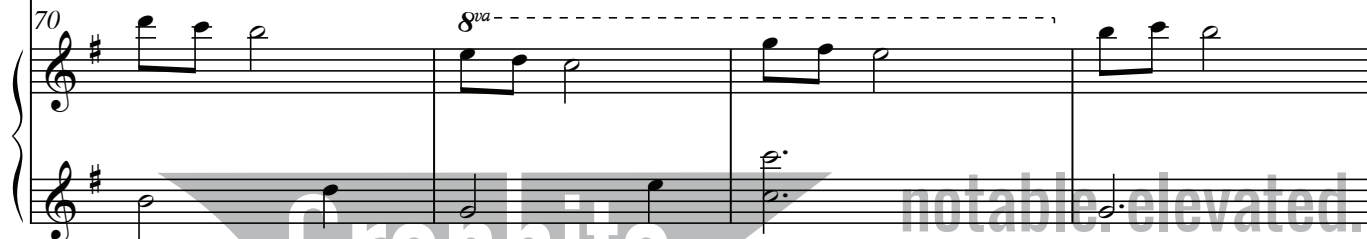
64 *p*  
How of - ten at

64 *mf* *pp*

70



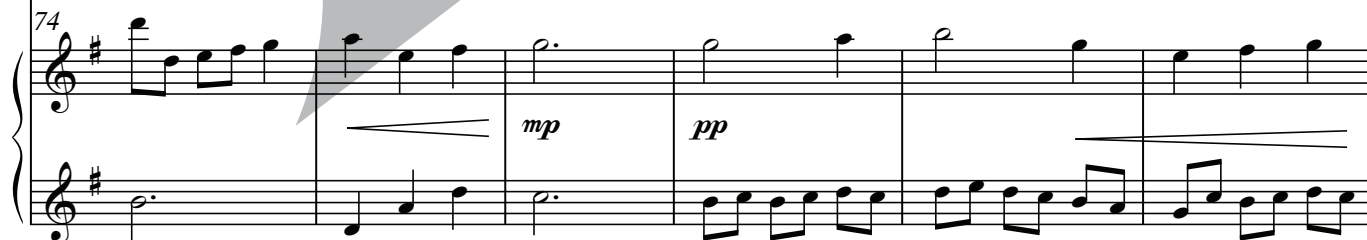
70



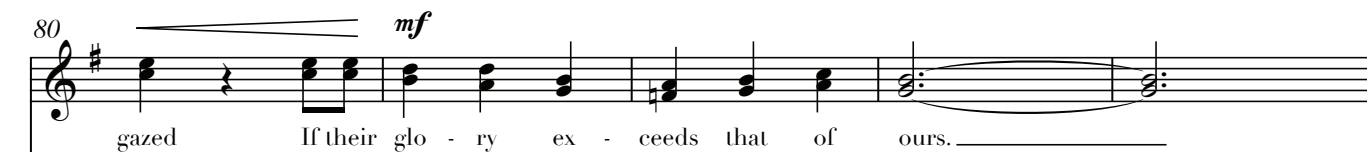
74



74



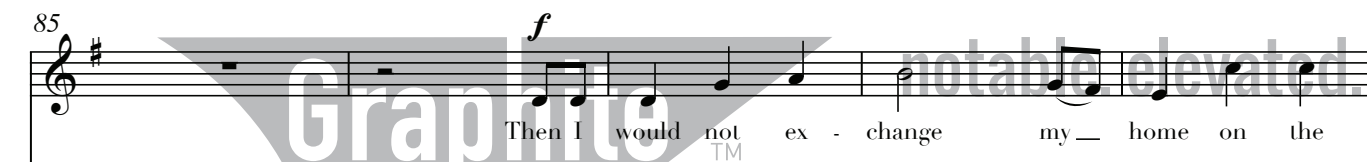
80



80



85



85



90



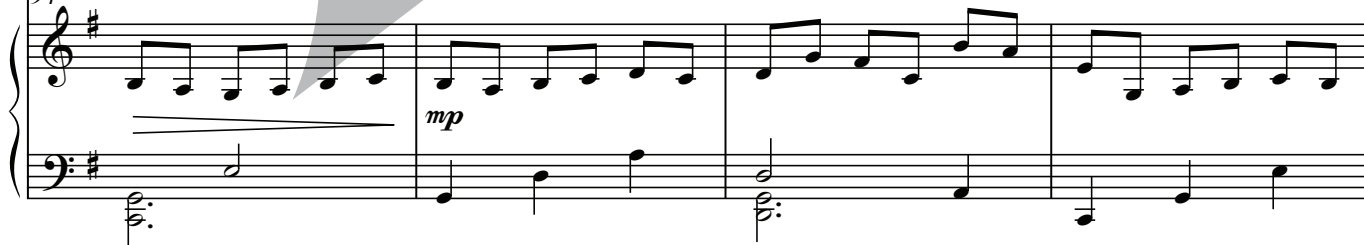
90



94



94



98



98



103



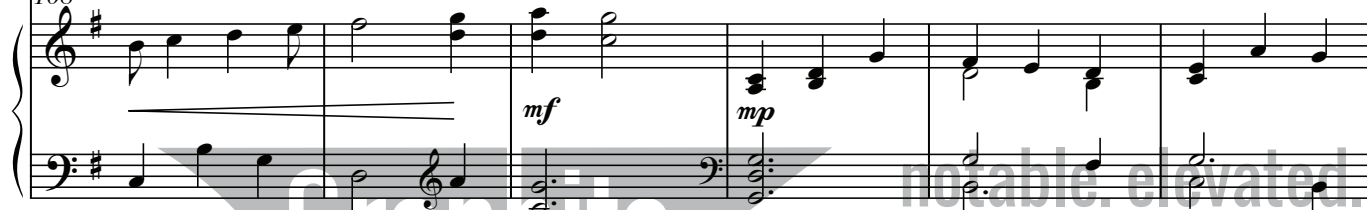
103



108



108



114



114



119



124



# Timothy C. Takach



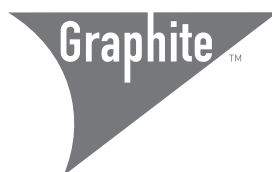
Inspired by captivating narrative, speculative fiction and making better humans through art, the music of Timothy C. Takach is a mainstay in the concert world. Applauded for his melodic lines, thoughtful text choices and rich, intriguing harmonies, Takach has received commissions and performances from GRAMMY Award-winning ensembles Roomful of Teeth and the St. Paul Chamber Orchestra, Santa Fe Desert Chorale, the St. Olaf Band, Cantus, U.S. Army Field Band and Soldiers' Chorus, Lorelei Ensemble, VocalEssence, the DeBartolo Performing Arts Center, The Rose Ensemble, and numerous other organizations. His compositions have been performed on A Prairie Home Companion, The Boston Pops holiday tour, PBS, many All-State and festival programs and at venues such as the Library of Congress, Kennedy Center and Royal Opera House Muscat. He is a co-creator of the theatrical production of *All is Calm: the Christmas Truce of 1914*, by Peter Rothstein. Takach has been Composer in Residence for the Texas Boys Choir, The Singers – Minnesota Choral Artists, and True Concord Voices and Orchestra.

Takach's a cappella choral symphony Helios is "larger than life, as if the piece were accompanied by an orchestra" and is "complemented with brilliant visuals created by CandyStations" (Tucson.com). In 2023 his ballet *Unfashioned Creature* was premiered in St. Paul, MN by the James Sewell Ballet. Takach was a co-founder, singer and Artistic Co-Director of the vocal ensemble Cantus and has frequent national work as a composer-in-residence, presenter, clinician and lecturer. He lives in Minneapolis with his wife and two sons.

## Other works for treble voices from Graphite:

Eric William Barnum	GP-B012	Spark	SSAA (div), a cappella
Eric William Barnum	GP-B015	Heaven Full of Stars	SSAA, a cappella
B.E. Boykin	GP-B019	Stardust	SSA, piano, djembe
B.E. Boykin	GP-B020	O Magnum Mysterium	SSAA a cappella
B.E. Boykin	GP-B021	Ave Maria	SSAA a cappella
Jenni Brandon	GP-B013	Breakable	SA, piano
Jennifer Lucy Cook	GP-C010	Over and Over	SSAA with TBB and/or synth
Jennifer Lucy Cook	GP-C012.5	How Can I Keep From Singing	2-part treble, piano
Dessa & Jocelyn Hagen	GP-D023.3	Controlled Burn	SSA, string quartet, piano
Christine Donkin	GP-D024	Autumn colours in the canal	SSAA, piano
Martha Hill Duncan	GP-D002	Songs of Tekahionwake (2 songs)	SSA, piano, hand drum; SSSSAA, a cappella
Martha Hill Duncan	GP-D022	Step to the Fiddle	2-part treble, piano
Jocelyn Hagen	GP-H011	I Started Out Singing	3-part treble, piano
Jocelyn Hagen	GP-H009	Ave Maris Stella	SSSSAA, a cappella
Jocelyn Hagen	GP-H017	Starting Now	SSAA, piano
Hagen & Takach	GP-N001.1	Havaa's Lullaby	2-part treble, a cappella
Isaac Lovedahl	GP-L001	Behind the Mountain	3-part round for equal voices
Luke Mayernik	GP-M006	A Round for Hidegard	7 treble voices, viola, cello, percussion
Paul John Rudoj	GP-R012.1	For the Beauty of the Earth	SSAA, a cappella
Paul John Rudoj	GP-R013.1	Gamaya	equal voices, opt. djembe
Paul John Rudoj	GP-R017.1	If I Were a Dog	SSA, piano
Paul John Rudoj	GP-R020.1	Two Old Crows	SSA, piano, violin
Timothy C. Takach	GP-T015	She Tore a Map	SA, piano
Timothy C. Takach	GP-T018.1	Mantra	SSA, piano
Timothy C. Takach	GP-T024	She Does Not Let Go	2-part treble, piano
Timothy C. Takach	GP-T025.5	Outshine	SA, piano
Ellen Gilson Voth	GP-V003	Standing Tall	SA, piano
Ellen Gilson Voth	GP-V003.4	Standing Tall	SSAA, piano
Dale Warland	GP-W004	Sed Amore	SA div, piano
Albert Pinsonneault	GP-P001.1	Intonation: Choral Exercises (2nd edition)	all voices

More pieces available for treble voices from the Lorelei Ensemble and Compose Like a Girl series!



notable. elevated.

[www.graphitepublishing.com](http://www.graphitepublishing.com)