

Stardust
GP-B019
SSA, piano, djembe

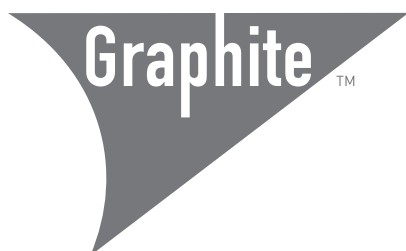
B.E. Boykin

pdf download \$2.15
printed \$4.15

B.E. Boykin

Stardust

for SSA choir, piano and djembe



notable. elevated.

www.graphitepublishing.com

Text:

If we are only stardust
Let your names reach to the sky above us

Like petals wafting on a breeze
We lift you up beyond our reach

“Kum Buba Yali, Kum Buba Tambe”
Amen, Amen
”Kum Buba Yali, Kum Buba Tambe”
We say your names

If we are only stardust
May your blood never be in vain

Like petals wafting on a breeze
We lift you up beyond our reach

“Kum Buba Yali, Kum Buba Tambe”
Amen, Amen
“Kum Buba Yali, Kum Buba Tambe”
We say your names

Each day we grieve another face
Maybe all this stardust
Will carry us home one day
To a home where we can run
A home where we can pray
A home where we can breathe,
To sleep and dream without fear
Is justice this far away?

We cry your names
For the strength to keep on fighting
With the hope that you are flying

“Kum Buba Yali, Kum Buba Tambe”
Stardust

- *Brittney Ray Crowell*

Notes:

In “Stardust,” the singers call for “a home where we can run” in memory of Ahmaud Arbery, “a home where we can pray” in memory of the victims of the Mother Emanuel shooting, “a home where we can breathe” in memory of George Floyd, and a home “to sleep and dream without fear” in memory of Breonna Taylor. When we sing, we pray twice, and it is my prayer that this piece stirs all who hear it to call for justice for the people of color taken from this world before their time and without concern for their humanity.

- *Marcus J. Jauregui*

From the Poet:

“Kum Buba Yali, Kum Buba Tambe”

“These are the ‘magic words’ from Virginia Hamilton’s ‘The People Could Fly.’ There’s no actual translation for it, although it has some similarities to some African languages/dialects. The lack of translation may have been Hamilton’s way of showing how most of the Africans lost access to their ability to fly due to being enslaved and removed from their culture.”

Brittney Ray Crowell is a native of Texarkana, TX. She is the recipient of a Donald Barthelme Prize in Poetry and the Lucy Terry Prince Prize, judged by Major Jackson. Her poems have been published or are forthcoming in *Ploughshares*, *Frontier*, *The Common*, *The West Review*, *Mount Island*, *Aunt Chloe*, *Copper Nickel*, *The Journal*, and the anthology *Black Lives Have Always Mattered*. She recently participated as one of the librettists for the Kennedy Center’s Cartography Project. She is a teaching assistant and PhD candidate in Creative Writing and Literature at the University of Houston and a poetry editor for Gulf Coast.



For perusal purposes only. Do not copy. Stardust

for SSA choir, piano, & djembe

Brittney Ray Crowell

B.E. Boykin

♩ = 85

Djembe

Piano

6

S1 *mf* If we are on - ly star - dust.

S2 *mf* If we are on - ly star - dust.

A *mf* If we are on - ly star - dust.

6

Graphite™

notable.elevated.

10

S1 *For perusal purposes only. Do not copy.*
Let your names reach to _____ the sky a -

S2
Let your names reach to _____ the sky a -

A
Let your names reach TM to _____ the sky a -

13

S1 *For perusal purposes only. Do not copy.*
bove us _____ Like pet - als waft - ing on _____ a

S2
bove us _____ Like pet - als waft - ing on _____ a

A
bove us _____ Like pet - als waft - ing on _____ a

16

S1
breeze we lift you up be - yond our reach

S2
breeze we lift you up be - yond our reach

A
breeze we lift you up be - yond our reach

19

S1
Kum Bu - ba Ya - li Kum - Bu - ba Tam - be

S2
Kum Bu - ba Ya - li Kum - Bu - ba Tam - be

A
Kum Bu - ba Ya - li Kum - Bu - ba Tam - be

23

S1 Kum - Bu - ba Ya - li Kum Bu - ba Tam -

S2 Kum - Bu - ba Ya - li Kum Bu - ba Tam -

A Kum - Bu - ba Ya - li Kum Bu - ba Tam -

23

26

S1 be A-men! we say your names

S2 be A-men! we say your names

A be A-men! we say your names

26

30

S1 *For perusal purposes only. Do not copy.*
 If we are on - ly star - dust.

S2
 If we are on - ly star - dust.

A
 If we are on - ly star - dust.

Drum part with notation for snare, hi-hat, and bass drum.

30
 Piano accompaniment for measures 30-33.

34

S1 *For perusal purposes only. Do not copy.*
 May your blood never be in

S2
 May your blood never be in

A
 May your blood never be in

Drum part with notation for snare, hi-hat, and bass drum.

34
 Piano accompaniment for measures 34-37.

37

S1 vain _____ Like pet - als waft - ing on _____ a

S2 vain _____ Like pet - als waft - ing on _____ a

A vain _____ Like pet - als waft - ing on _____ a

37

S1 breeze we lift you — up — be - yond our reach

S2 breeze we lift you — up — be - yond our reach

A breeze we lift you — up — be - yond our reach

40

43

For perusal purposes only. Do not copy.

S1 Kum Bu - ba Ya - li Kum Bu - ba Tam -

S2 Kum — Bu-ba Ya - li

A Kum Bu - ba Ya - li Kum Bu - ba Tam -

46

For perusal purposes only. Do not copy.

S1 be Kum Bu - ba Ya - li

S2 Kum — Bu-ba Tam - be Kum — Bu-ba Ya -

A be Kum Bu - ba Ya - li

49

For perusal purposes only. Do not copy.

S1 Kum Bu - ba Tam - be Kum Bu - ba Ya -

S2 li Kum Bu-ba Tam - be

A Kum Bu - ba Tam - be Kum Bu - ba Ya -

49

For perusal purposes only. Do not copy.

S1 li Kum Bu - ba Tam - be

S2 Kum Bu-ba Ya - li Kum Bu-ba Tam -

A li Kum Bu - ba Tam - be

52

55

For perusal purposes only. Do not copy.

S1 Kum Bu - ba Ya - li Kum Bu - ba Tam -

S2 be Kum Bu-ba Ya - li

A Kum Bu - ba Ya - li Kum Bu - ba Tam -

58

For perusal purposes only. Do not copy.

S1 be A-men! we say your names

S2 A-men! we say your names

A be A-men! we say your names

mp

61 Meditatively ♩ = 60

For perusal purposes only. Do not copy.

S1 *mp* Each day we grieve a - no - ther face May -

S2 *mp* Each day we grieve a - no - ther face May -

A *mp* Each day we grieve a - no - ther face May -

Meditatively ♩ = 60

61

64

For perusal purposes only. Do not copy.

S1 be all this — star-dust will car - ry us home one day

S2 be all this — star-dust will car - ry us home one day

A be all this — star-dust will carTMry us home one day

64

66

S1 For perusal purposes only. Do not copy.

S2 To a home where we can run — oo notable. elevated.

A A home where we can pray

68

S1 For perusal purposes only. Do not copy.

S2 oo to

A A home where we can pray to

70

S1 sleep and dream — with - out fear is jus - tice — this far a -

S2 sleep and dream — with - out fear is jus - tice — this far a -

A sleep and dream — with - out fear is jus - tice — this far a -

$\text{♩} = 85$

S1 way — we cry your names we cry your

S2 way — we cry your names we cry your

A way — we cry your names we cry your

$\text{♩} = 85$

76

S1 names for the strength to keep on fight - ing with the

S2 names for the strength to keep on fight - ing with the

A names for the strength to keep on fight - ing with the

76

78

S1 hope that you are fly - ing we cry your names we cry your

S2 hope that you are fly - ing we cry your names we cry your

A hope that you are fly - ing we cry your names we cry your

78

80

S1 *For perusal purposes only. Do not copy.*
 names for the strength to keep on fight - ing with the

S2
 names for the strength to keep on fight - ing with the

A
 names _____ for the strength to keep on fight - ing with the

80

Piano accompaniment for measures 80-81, featuring a right-hand melody with a long note and a left-hand accompaniment.

82

S1 *For perusal purposes only. Do not copy.*
 hope that you are fly - ing your names _____ your

S2
 hope that you are fly - ing your names _____ your

A
 hope that you are fly - ing your names _____ your

82

Piano accompaniment for measures 82-85, featuring a right-hand melody with chords and a left-hand accompaniment.

85

S1 names _____ your names _____

S2 names _____ your names _____

A names _____ your names _____

85

88

S1 your names _____

S2 your names _____

A your names _____

88

Slow and reflective

91 *mf*

S1 Kum Bu - ba Ya - li Kum Bu - ba Tam - be Kum Bu - ba Ya - li

S2 *mf* Kum Bu - ba Ya - li Kum Bu - ba Tam - be Kum Bu - ba Ya - li

A *mf* Kum Bu - ba Ya - li Kum Bu - ba Tam - be Kum Bu - ba Ya - li

91 *mf*

Slow and reflective

97 *mp*

S1 star - dust

S2 *mp* star - dust

A *mp* star - dust

97 *mp*

101

S1 *For perusal purposes only. Do not copy.*
 If we ___ are ___

S2
 If we ___ are ___

A
 If we ___ are ___



101

Piano accompaniment for measures 101-104.

105

S1
 If we ___ are ___

S2
 If we ___ are ___

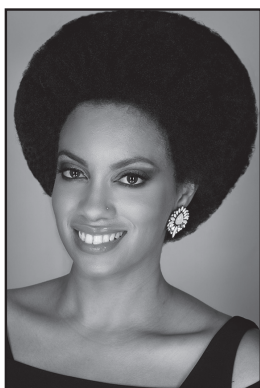
A
 If we ___ are ___



105

Piano accompaniment for measures 105-108.

B.E. Boykin



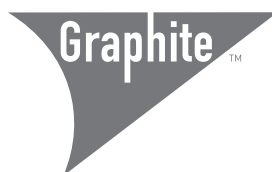
Brittney Boykin (B. E. Boykin) first pursued her interest in music during her time at Spelman College, attending classes that inspired and challenged her musical imagination and peaked her interest in composition. After graduating with a B.A. in Music, Boykin continued her studies while attending Westminster Choir College of Rider University in Princeton, New Jersey, graduating with a M.M. in Sacred Music and receiving the R & R Young Composition Prize. Boykin has been commissioned and collaborated with several organizations, including a number of ACDA divisions, the Minnesota Opera and the Kennedy Center. She obtained her PhD from Georgia State University with an emphasis in Music Education and is currently an Assistant Professor of Music at the Georgia Institute of Technology.

Other works for treble voices from Graphite:

Eric William Barnum	GP-B012	Spark	SSAA (div), a cappella
Eric William Barnum	GP-B015	Heaven Full of Stars	SSAA, a cappella
B.E. Boykin	GP-B019	Stardust	SSA, piano, djembe
B.E. Boykin	GP-B020	O Magnum Mysterium	SSAA a cappella
B.E. Boykin	GP-B021	Ave Maria	SSAA a cappella
Jenni Brandon	GP-B013	Breakable	SA, piano
Jennifer Lucy Cook	GP-C010	Over and Over	SSAA with TBB and/or synth
Jennifer Lucy Cook	GP-C012.5	How Can I Keep From Singing	2-part treble, piano
Dessa & Jocelyn Hagen	GP-D023.3	Controlled Burn	SSA, string quartet, piano
Christine Donkin	GP-D024	Autumn colours in the canal	SSAA, piano
Martha Hill Duncan	GP-D002	Songs of Tekahionwake (2 songs)	SSA, piano, hand drum; SSSSAA, a cappella
Martha Hill Duncan	GP-D022	Step to the Fiddle	2-part treble, piano
Jocelyn Hagen	GP-H011	I Started Out Singing	3-part treble, piano
Jocelyn Hagen	GP-H009	Ave Maris Stella	SSSSAA, a cappella
Jocelyn Hagen	GP-H017	Starting Now	SSAA, piano
Hagen & Takach	GP-N001.1	Havaa's Lullaby	2-part treble, a cappella
Isaac Lovedahl	GP-L001	Behind the Mountain	3-part round for equal voices
Luke Mayernik	GP-M006	A Round for Hidegard	7 treble voices, viola, cello, percussion
Paul John Rudoj	GP-R012.1	For the Beauty of the Earth	SSAA, a cappella
Paul John Rudoj	GP-R013.1	Gamaya	equal voices, opt. djembe
Paul John Rudoj	GP-R017.1	If I Were a Dog	SSA, piano
Paul John Rudoj	GP-R020.1	Two Old Crows	SSA, piano, violin
Timothy C. Takach	GP-T015	She Tore a Map	SA, piano
Timothy C. Takach	GP-T018.1	Mantra	SSA, piano
Timothy C. Takach	GP-T024	She Does Not Let Go	2-part treble, piano
Timothy C. Takach	GP-T025.5	Outshine	SA, piano
Ellen Gilson Voth	GP-V003	Standing Tall	SA, piano
Ellen Gilson Voth	GP-V003.4	Standing Tall	SSAA, piano
Dale Warland	GP-W004	Sed Amore	SA div, piano

Albert Pinsonneault	GP-P001.1	Intonation: Choral Exercises (2nd edition)	all voices
---------------------	-----------	--	------------

More pieces available for treble voices from the Lorelei Ensemble and Compose Like a Girl series!



notable. elevated.

www.graphitepublishing.com